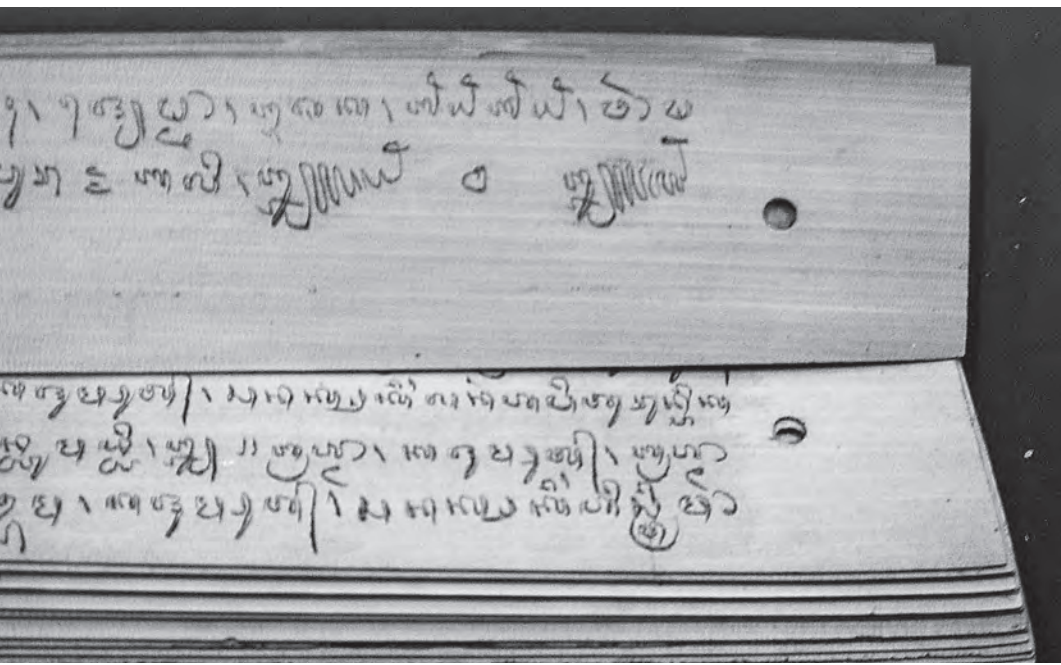


Chettiar Moneylender of the Straits Settlements (Malaya), circa 1890
SOURCE: KITLV Image Collection, 6539



The Guntur Inscription, 907 A.D.

SOURCE: Collectie Wereldmuseum Rotterdam, no. 24505



Last pages of a palm leaf manuscript — a so-called *lontar* — of the early sixteenth-century Javanese law text *Agama*, written in Balinese script and dating from before 1876.

SOURCE: Leiden University Library, Oriental Manuscripts Collection LOr 2215



(Top) Chinese Temple in Makassar: Klenteng Ibu Agung Bahari (Thian Ho Kung, Tian Hou Gong). Built in the early eighteenth century, dedicated to the Fujian Protectress of Seafarers. This photo is from circa 1900.

SOURCE: KITLV Image Collection, 7556

(Bottom) Late Eighteenth-Century House in Makassar, photographed circa 1920

SOURCE: KITLV Image Collection, 9932



Makassar in 1750

Source: Sketch by J.M. Aubert in the Rijksmuseum, Amsterdam, inventory no. RP-T-00-3234

買香業

辛酉年

和 肆

拾 肆 號 新 街 延 禧 街 廣 益 號

入 存 捐 贈 香 業 銀 兩 拾 肆 兩

入 存 還 倉 香 業 王 銀 兩 拾 肆 兩

共 肆 兩

收利息

辛酉年

辛 酉 年 收 息 銀 兩 拾 肆 兩

拾 肆 兩 收 息 銀 兩 拾 肆 兩

十 兩 收 息 銀 兩 拾 肆 兩

共 肆 兩

和 肆

Semarang Tjie Lam Tjay Account Book, 1921, pages 24 and 32, recording credit transactions of Be Biauw Tjoan and Be Biauw Ong
 SOURCE: Photographs taken by K'wee Hui Kian

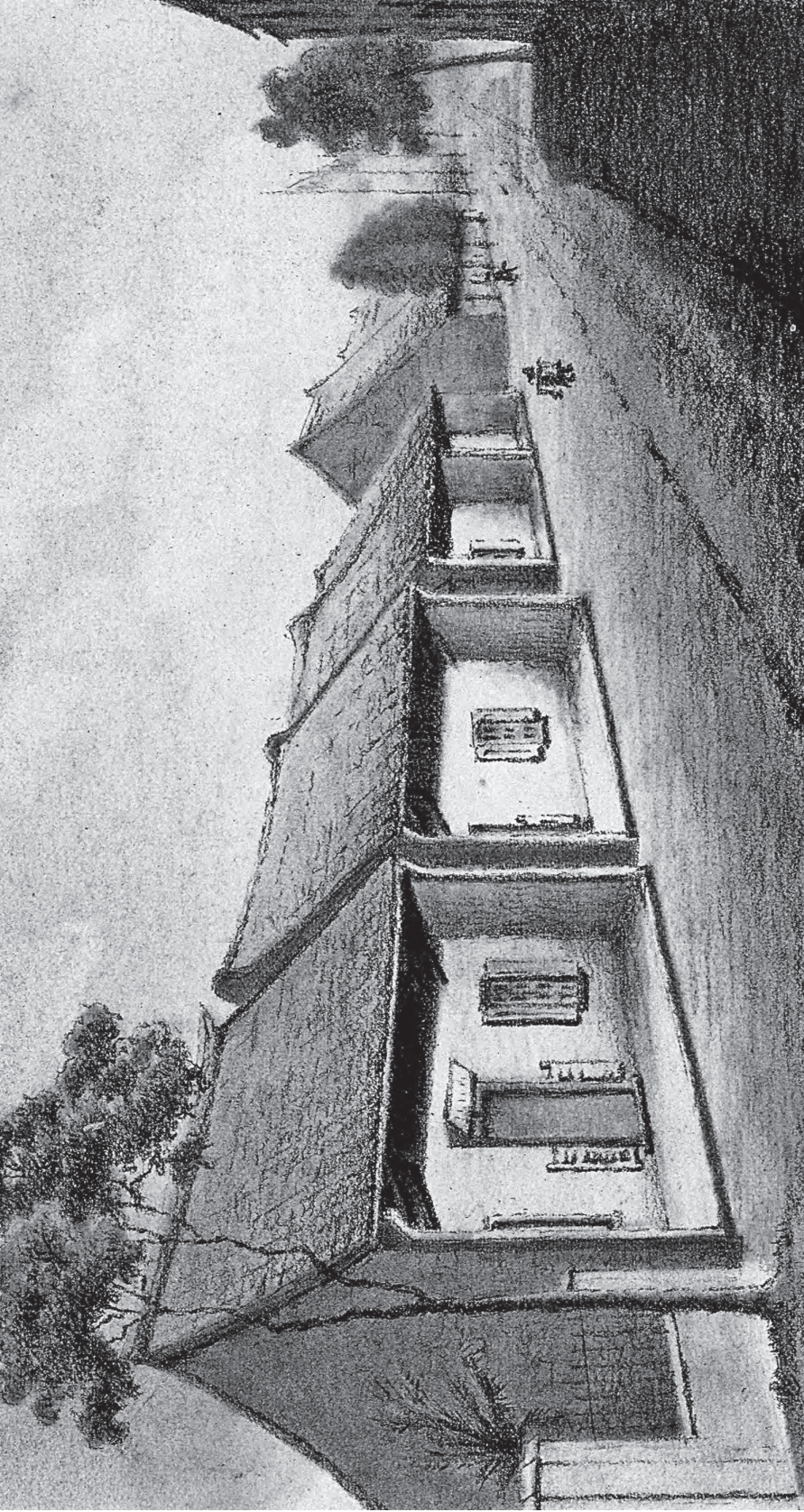


Chinese Quarter of Surabaya with Dutch Resident's Office in the Background, circa 1900

SOURCE: KITLV Image Collection, 19186



Chineseche Kamp (Chinese Quarter), Surabaya, circa 1898
SOURCE: KITLV Image Collection, 6412



Chinese Shop Houses in Surabaya, circa 1880
SOURCE: KITLV Image Collection, 37 B-413