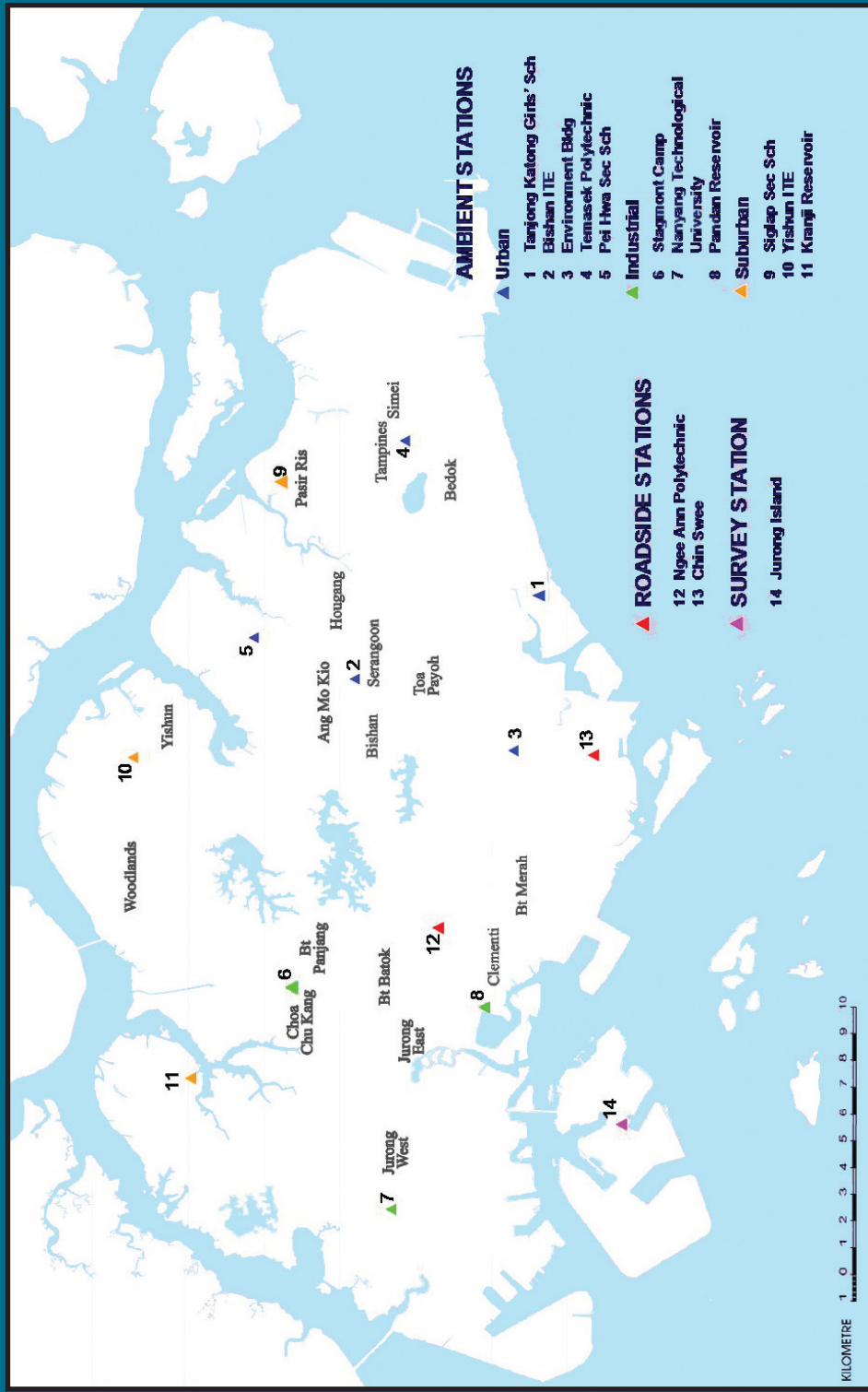


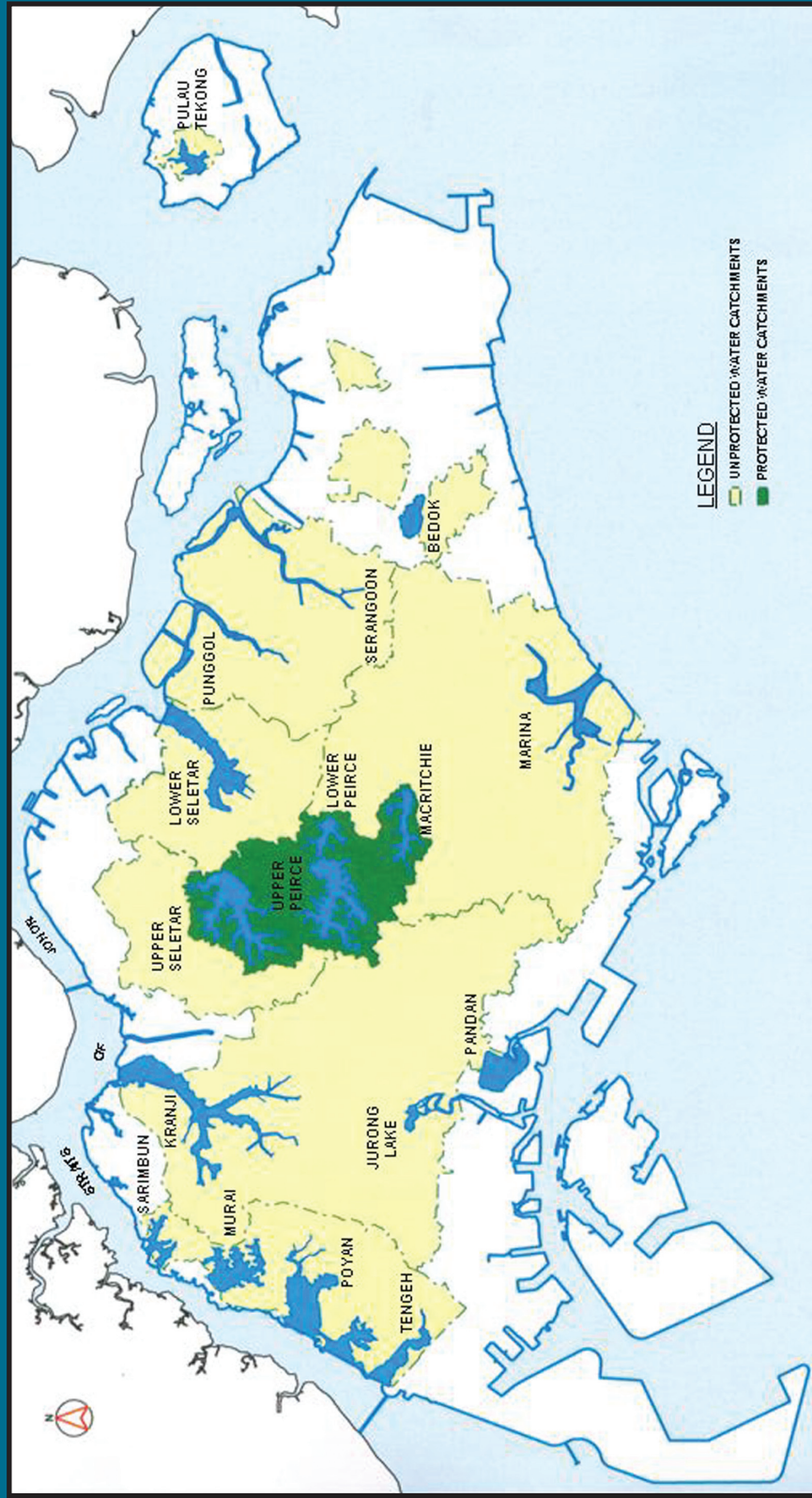
Map 1. Locations of air quality monitoring stations in Singapore. The 15th station is a mobile station with no fixed location.



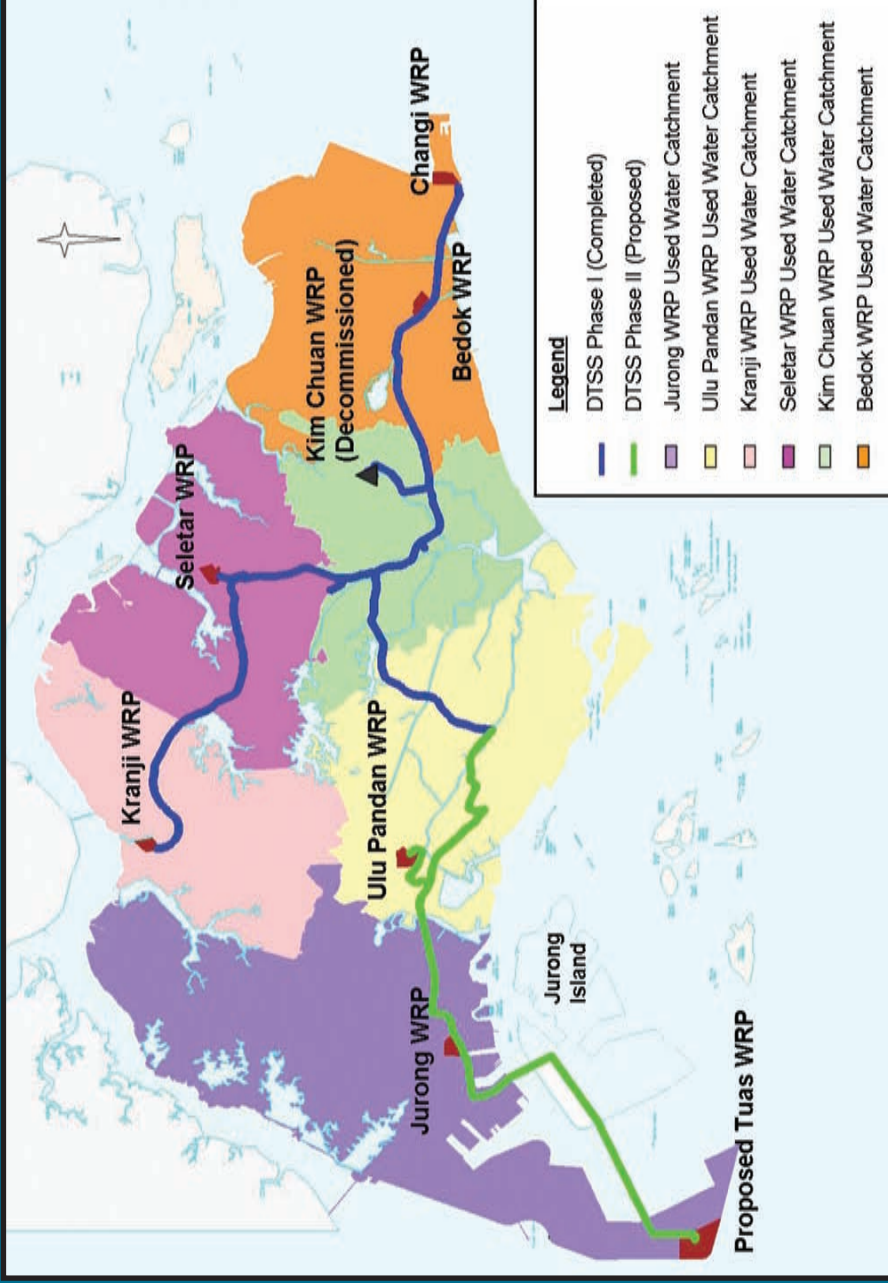
Map 2. Locations of incineration plants and Semakau Landfill.



Map 3. Reservoirs and water catchments in Singapore after the completion of Marina, Punggol, and Serangoon Reservoirs.



Map 4. Map of Singapore showing the Deep Tunnel Sewerage System and Water Reclamation Plants.



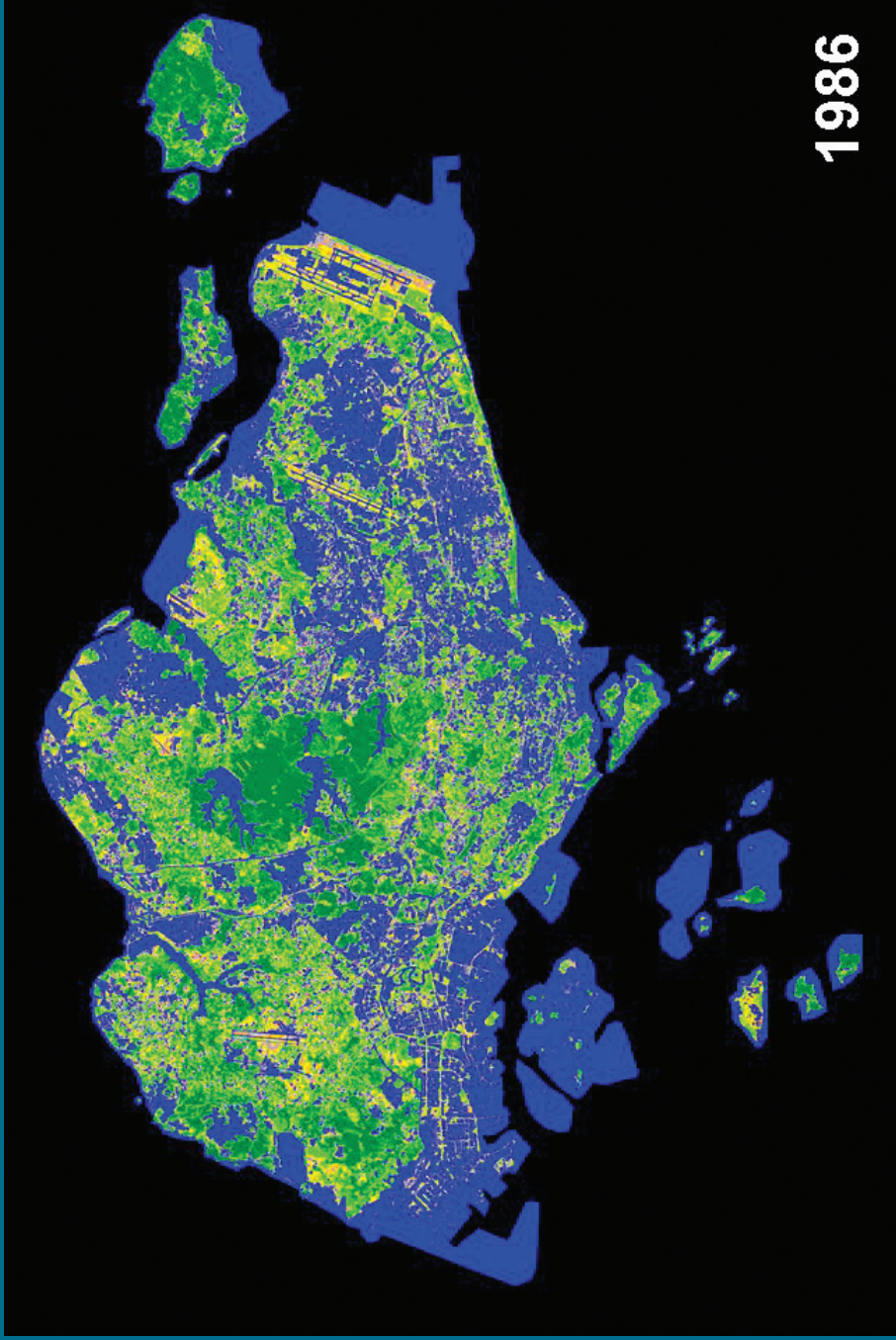
Source: PUB.

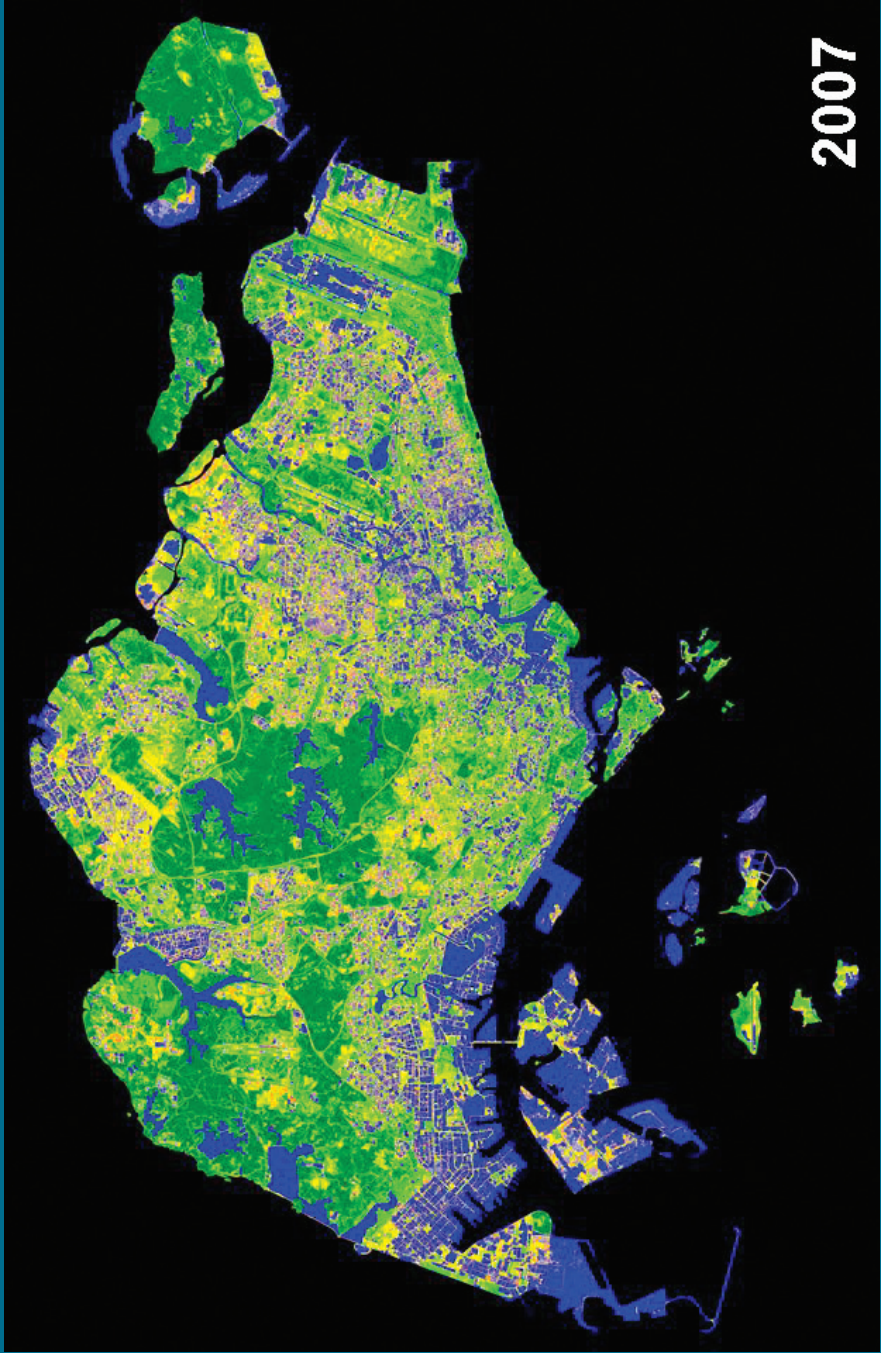
Map 5. Blue Map of Singapore showing the network of reservoirs and waterways.



Source: PUB.

Map 6. Singapore's green cover grew from 35.7 to 46.5 per cent between 1986 and 2007.





2007

Source: NUS CRISP.