

# APPENDICES

## APPENDIX I: MAJOR ENVIRONMENTAL LAWS IN SINGAPORE

### I. Pollution Control and Environmental Health

- Environmental (Public Health) Act, Chapter 95 (relating to public health in general)
  - Environmental Public Health (Markets) Regulations 1969
  - Environmental Public Health (Hawkers) Regulations
  - Environmental Public Health (Public Cleansing) Regulations 1970
  - Environmental Public Health (Food Handlers) Regulations
  - Environmental Public Health (Funeral Parlours) Regulations
  - Environmental Public Health (Crematoria) Regulations
  - Environmental Public Health (Food Establishment) Regulations
  - Environmental Public Health (Manufacture and Sale of Ice Cream) Regulations
  - Environmental Public Health (Swimming Pools) Regulations
  - Environmental Public Health (Toxic Industrial Waste) Regulations 1988
  - Environmental Public Health (General Waste Collection) Regulations
  - Environmental Public Health (Notice to Attend Court) Regulations
  - Environmental Public Health (Control of Noise from Construction Sites) Regulations
  - Environmental Public Health (Corrective Work Order) Regulations
  - Environmental Public Health (Composition of Offences) Rules
  - Environmental Public Health (Boundary Noise Limits for Factory Premises) Regulations
- Water Pollution Control and Drainage Act, Chapter 348 (water pollution, sewerage, drainage matters)
  - Sanitary Plumbing and Drainage Systems Regulations 1976

- o Surface Water Drainage Regulations 1976
- o Trade Effluent Regulations 1976
- o Sewage Treatment Plants Regulations 1976
- Clean Air Act, Chapter 45 (air quality)
  - o Clean Air (Standards) Regulations 1972, as amended 1978
  - o Clean Air (Prohibition on the Use of Open Fires) Order 1973
- Factories Act, Chapter 104 (regulation of factories and working conditions within)
  - o Factories (Abrasive Blasting) Regulations
  - o Factories (Asbestos) Regulations 1980
  - o Factories (Permissible Exposure Levels of Toxic Substances) Order 1996
  - o Factories (Medical Examinations) Regulations
  - o Factories (Noise) Regulations
- Hydrogen Cyanide (Fumigation) Act, Chapter 132 (handling of hydrogen cyanide)
  - o Hydrogen Cyanide (Fumigation) Regulations
- Petroleum Act, Chapter 229 (handling, transport and storage of petroleum)
  - o Petroleum (Transport and Storage) Rules
  - o Petroleum (Storage Licence Fees) Rules
  - o Petroleum (Transport by Land — Fees) Rules
- Road Traffic Act, Chapter 276 (vehicular pollution and traffic congestion)
  - o Road Traffic (Public Service Vehicles) Rules
  - o Road Traffic (Motor Vehicles) (Construction and Use) Rules
  - o Road Traffic (Restricted Zone and Area Licences) Rules
  - o Road Traffic (Motor Vehicles, Quota System) Rules
  - o Road Traffic (Composition of Offences) Rules
- Sand and Granite Quarries Act, Chapter 284
  - o Sand and Granite Quarries Regulations
- Control of Imports and Exports Act, Chapter 56 (import and export of controlled substances)
  - o Control of Imports and Exports (Montreal Protocol) Order 1989
  - o Control of Imports and Exports (Chewing Gum) Order
- Hazardous Waste (Control of Export, Import and Transit) Act, Chapter 122A (implementation of the Basel Convention on the Transboundary Movement of Hazardous Wastes)
  - o Hazardous Waste Regulations 1998

- Control of Plants Act, Chapter 57A
- Destruction of Disease-Bearing Insects Act, Chapter 79
  - Destruction of Disease-Bearing Insects (Prescribed Form) Regulations
- Infectious Diseases Act, Chapter 137 (control of infectious diseases)
  - Infectious Diseases (Quarantine) Regulations
  - Infectious Diseases (International Certificates of Vaccination) Regulations
  - Infectious Diseases (Diphtheria and Measles Vaccination) Regulations
  - Infectious Diseases (Prescribed Form) Regulations
- Poisons Act, Chapter 234 (handling of poisonous substances)
  - Poison Rules
  - Poison (Hazardous Substances) Rules 1986
- Smoking (Control of Advertisements and Sale of Tobacco) Act, Chapter 309
- Smoking (Prohibition in Certain Places) Act, Chapter 310 (banning of smoking in public places)
- Radiation Protection Act, Chapter 262
  - Radiation Protection (Non-Ionizing Radiation) Regulations
  - Radiation Protection Regulations
  - Radiation Protection (Transportation of Radioactive Materials) Regulations 1974
- Sale of Drugs Act, Chapter 282
  - Drug Regulations
  - Sale of Drugs (Prohibited Substances) Regulations
  - Sale of Drugs (Prohibited Drugs) (Consolidation) Regulations

## **II. Laws Relating to Planning and Land Use Management**

- Sale of Lands Act, Chapter 314
- State Lands Encroachment Act, Chapter 315
- Urban Redevelopment Authority Act, Chapter 340
- Building Control Act, Chapter 29
- Planning Act, Chapter 232

## **III. Laws Relating to Nature Conservation**

- Fisheries Act, Chapter 111 (regulation of fishing activities)
  - Fisheries (Fishing Vessels) Rules
  - Fisheries (Piranha) Rules
  - Fisheries (Fishing Harbour) Rules

- o Fisheries (Fish Processing Establishment) Rules
- o Fisheries (Fishing Gear) Rules
- o Fisheries (Fish Culture Farms) Rules
- o Fisheries (Riverine Fishing) Rules
- Endangered Species (Import and Export) Act, Chapter 92A (handling of endangered fauna and flora)
  - o Endangered Species (Import and Export) (Fees) Rules
  - o Endangered Species (Import and Export) (Amendment of Schedules) Notification
  - o Endangered Species (Import and Export) (Prohibition of Sale) Notification
- National Parks Act, Chapter 198A
  - o National Parks Regulations 1990
- Parks and Trees Act, Chapter 216 (parks not gazetted as national parks)
  - o Parks and Trees Rules
  - o Parks and Trees (Preservation of Trees) Order
  - o Officers to Exercise Powers of Police Officers within Public Park Notification
- Wild Animals and Birds Act, Chapter 351
  - o Wild Animals and Birds (Bird Sanctuaries) Order 1970
  - o Wild Animals (Licensing) Order 1975
  - o Wild Animals and Birds (Amendment of Schedule) Notification
- Animals and Birds Act, Chapter 7
  - o Animals and Birds (Dog Licensing & Control) Rules
  - o Animals and Birds Shop, Poultry Shop, Hatchery (Licensing & Control) Rules
  - o Animals and Birds (Licensing of Farms) Rules
  - o Animals and Birds (Pigeon) Rules
  - o Animals and Birds (Infirmity Fees) Rules
  - o Animals and Birds (Quarantine Rules)
  - o Animals and Birds (Pullorum Disease Eradication) Rules
  - o Animals and Birds (Veterinary Fees) Rules
  - o Animals and Birds (Importation) Order
  - o Animals and Birds (Prohibition on the Importation of Pigs) Order
- Public Utilities Act, Chapter 261 (water catchment areas)
  - o Public Utilities (Composition of Offences) Regulations
  - o Public Utilities (Water Supply) Regulations
  - o Public Utilities (Central Water Catchment Area and Catchment Area Parks) Regulations
  - o Regulations

- Cattle Act, Chapter 34 (regulation of cattle)
  - Cattle Regulations
  - Cattle (Licence Fees) Regulations
  - Cattle (Restricted Areas) Notification 1986
  - Cattle (Restricted Areas) Notification 1987
- Preservation of Monuments Act, Chapter 239
  - Preservation of Monuments (Consolidation) Order

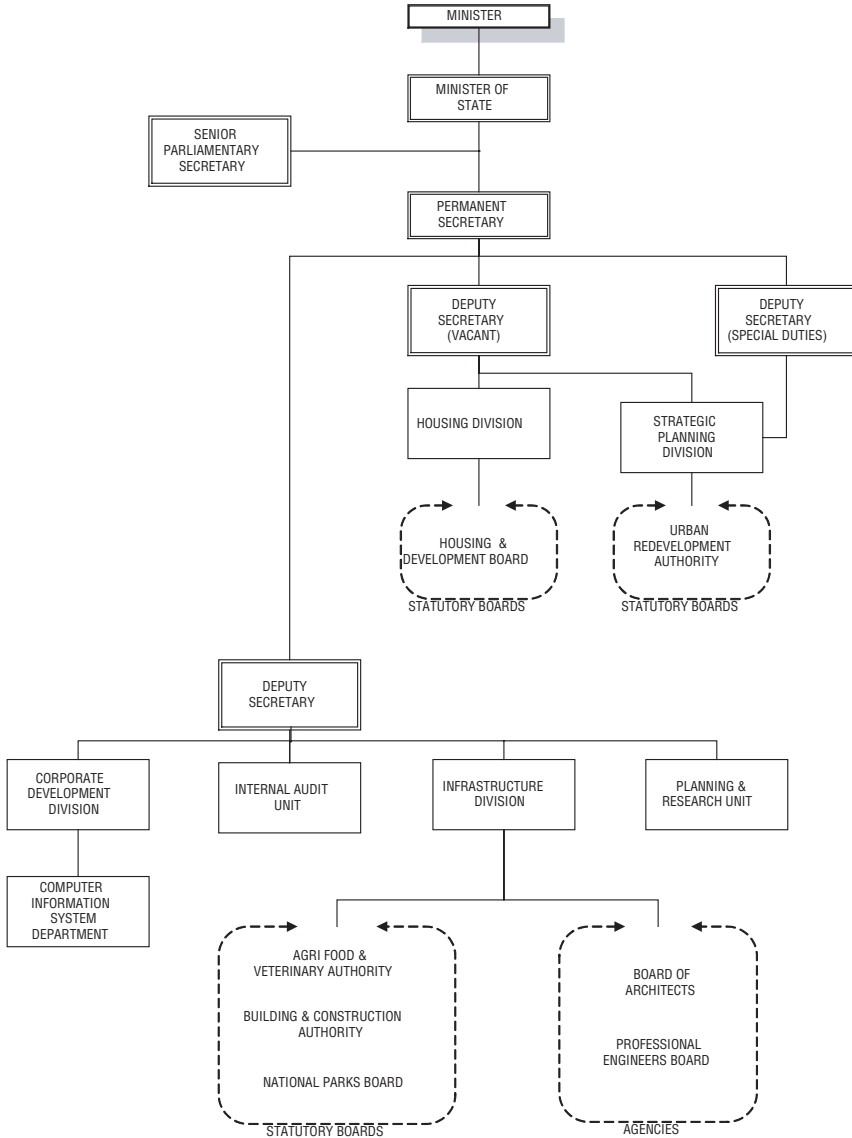
#### **IV. Laws Relating to Marine Pollution**

- Prevention of Pollution of the Sea Act, Chapter 111
  - Prevention of Pollution of the Sea (Oil) Regulations S 59/199!
  - Prevention of Pollution of the Sea (Noxious Liquid Substance in Bulk) Regulations
  - Prevention of Pollution of the Sea (Reporting of Pollution Incidents) Regulations
  - Prevention of Pollution of the Sea (Reception Facilities) Regulations
  - Prevention of Pollution of the Sea (Detergent and Equipment) Regulations
  - Prevention of Pollution of the Sea (Composition of Offences) Regulations
- Merchant Shipping (Oil Pollution) Act, Chapter 180 (civil liability arising out of oil pollution)
  - Merchant Shipping (Oil Pollution) (Compulsory Insurance Certificate) Regulations
  - Merchant Shipping (Safety Convention) Regulations 1984
- Port of Singapore Authority Act, Chapter 236 (regulation of port activities)
  - Port of Singapore Authority (Dangerous Goods, Petroleum and Explosives) Regulations
  - Singapore Port Regulations 1977

*Source:* APCEL Report, Singapore.



## APPENDIX III: MINISTRY OF NATIONAL DEVELOPMENT ORGANIZATIONAL CHART



Source: Ministry of National Development, 2004.

## APPENDIX IV: SUBJECT GROUPS' RECOMMENDATIONS AND URA/NPARKS REPOSSES TO MASTER PLAN

### LIST OF RECOMMENDATIONS

#### Diversity of Parks and Nature Areas

1. Categorise our parks into three categories, according to ease of access, elaborateness of facilities and degree of landscaping:
  - a. **Category A** — natural areas to keep pristine, with existing vegetation and trails left untouched and possibly discrete directional signs may be put up to mark the entrances
  - b. **Category B** — wilderness areas with some basic facilities to facilitate access, such as toilets, shelters and formal tracks, e.g. Bukit Timah Nature Reserve
  - c. **Category C** — public parks, with landscaping and facilities, e.g. town parks

#### Making Nature Areas More Accessible

##### Northern Wetlands — Sungei Buloh and the Kranji marshes

2. Support the new nature parks next to the Sungei Buloh mangroves and keep them as Category A to Category B open spaces.
3. Support camping at new nature parks next to Sungei Buloh if suitable sites are found, but consideration must be given to waste management and minimising interference with the mangrove and its wildlife.
4. Support new nature park at the Kranji marshes and keep it as a Category A to Category B open space.
5. Provide a buffer along the shorelines of the Kranji reserve where possible.
6. Support the proposed boardwalk connecting the Sungei Buloh mangroves to the Kranji marshes but allow public access only to the southern 500m of the 2km PUB bund, and do not extend the boardwalk/trail across the S. Jelutong estuary to protect this particularly sensitive area.
7. Allow inland trails perpendicular to the reservoir edge leading to the edge of the marsh.



8. Study appropriate locations for hides to view birdlife along the mangrove coastline, as well as north of S. Jelutong.
9. Support non-motorised boating on Kranji Reservoir, organised by responsible operators. Boats should not go within 50m of the bund where access is restricted.
10. Support nature trails through Lim Chu Kang farmland for both recreational and educational value. The trails should be of Category B access.
11. Support the proposed trails, boardwalks, canopy walk, and observation tower as shown in the Parks & Waterbodies Plan. Care is to be taken to cause minimal disturbance to the flora and fauna. For different parts of the Central Catchment, ease of access and infrastructure should be varied according to the eco-sensitivity of the areas.
12. NParks to produce brochures and trail guides for the Central Catchment.

### **Interim Greens Around The Central Catchment**

13. Support the interim greens at Dairy Farm, Windsor Area and Old Upper Thomson Road, but propose to keep the entire Chestnut Interim Green as a permanent green.
14. Support the Chestnut Green and keep it as a Category A Open Space for adventure lovers.
15. Drop the scenic drive and eco-lodge ideas.
16. Let there instead be a scenic walking and cycling trail of Category B access.
17. The existing mountain hiking course should also have Category B access and treatment.
18. Enhance the streetscape of the Bukit Timah Expressway to become the scenic road through this area.
19. Support the Dairy Farm Interim Green and keep it as a Category B Open Space.
20. Support adventure camps, corporate retreats, outdoor performances, rock climbing, boating, hiking and cycling trails of the Dairy Farm Interim Green, but there should be no building structure within the quarry, and near or close to the path leading into the quarry.

21. NParks to be the managing agency for the entire Dairy Farm Interim Green.
22. Parks should produce trail guides showing how the trails are linked to that in the Central Catchment Nature Reserve and Bukit Timah Nature Reserve.
23. Support the Windsor Interim Green and keep it as a Category B open space. Provide basic facilities for the informal football pitch.
24. Develop tree bank at the Windsor Interim Green as an educational resource.
25. NParks to produce trail maps to show how trails here are linked to those in the Central Catchment.
26. Explore with Singapore Island Country Club (SICC) to allow reasonable public access along the fringe of the golf course and through its grounds.

### **Urban And Town Parks**

27. Support the proposed waterfront parks at Coney Island, Lower Seletar Reservoir Park, Jurong Lake Park and Tampines Quarry Park.
28. Support the Lower Seletar Reservoir Park. Ensure good connectivity between the existing park and the new park extension along the Lower Seletar Reservoir waterfront.
29. Study the feasibility of providing an underpass connection between Yishun Stadium and the existing Lower Seletar Reservoir.
30. Allow public access along Sungei Seletar, where it does not compromise existing uses.
31. Support Tampines Quarry Park and keep it as a Category B open space. Provide a simple trail around the quarry, with some park benches and lookout points.
32. Not to fight for the preservation of the small marshland adjoining the Tampines quarry.
33. Support the proposed Sengkang Park, Woodlands Regional Park, Bidadari Park, Tampines Linear Park and Jurong West Park.
34. Support the proposed Sengkang Park which will incorporate existing mangroves and riverine vegetation along Sungei Punggol as part of the park.

35. Look for ways to maximise access from the proposed sports stadium adjoining the proposed Sengkang Park to the waterfront.
36. Landscape the edges of Punggol River in order to soften the banks and make it look more natural.
37. Support the proposed Woodlands Regional Park which will incorporate existing mangroves as part of the park.
38. Tidy up land use along the coastal promenade of the proposed Woodlands Regional Park and bring in activities designed to attract people to use the area for recreation.
39. Support the proposed park expansions at Pasir Ris Park, East Coast Park, Labrador Park, Choa Chu Kang Town Park, Zhenghua Park and Bukit Batok Park.

### **Park Connectors**

40. Support the proposed park connector network, and suggest an additional park connector from Woodlands Town to Mandai Road through Ulu Sembawang.
41. Plan park connectors upfront to ensure that land is set aside for them at the outset.
42. Explore innovative approaches to achieve seamless connections, e.g. grade-separated or layered interchanges.

### **Streetscape Greenery**

43. Support the proposal to design integrated environment and apply different streetscape greenery treatments according to the context of the streets.
44. Support the proposal to link up Heritage Roads to provide a continuous experience of lush streetscape greenery.

### **Skyrise Greenery**

45. Support the proposal to encourage skyrise greenery through facade greenery, landscaped roof terraces, sky terraces and balconies, sky bridges and lobbies.
46. Explore further Gross Floor Area exemption incentives to encourage skyrise greenery.

### **Identity And Educational Opportunities In Parks**

47. Develop identity in parks through retaining geographical, cultural and historical features, and part of the original land uses of the place. Plan parks around such places.
48. In clearing land for development and when building infrastructure, such as roads and drains, minimise impact on the existing landscape and avoid destroying unique features of identity in the area.
49. Use parks as educational opportunities and let parks become places for visits apart from being merely spaces for local residents to use.

### **Canalisation of Natural Rivers**

50. Keep natural banks of rivers natural and avoid canalising these rivers. Where river widening or deepening is needed, have natural treatment.

### **Heritage Roads**

51. Extend width of green buffer for Category A Heritage Road from the existing 10m to 20m.
52. Keep the first 10m of Category A Heritage Road open to public access.
53. Consider giving Heritage Road status to the green part of Mandai Road.
54. Include for consideration as Category A Heritage Roads, beautiful tree-lined streets, e.g. Mount Rosie, even if they are adjoining private properties. These may be subject to a different buffer requirement in order not to compromise development potential.
55. Provide pedestrian access on Heritage Roads.

### **MINDEF Training Areas**

56. MINDEF to explore opening up selected training land, on selected days of the year, for public access.

### **RUSTIC COAST**

#### **Punggol Point and Coney Island**

57. Support turning Punggol Point into a paradise for sea sports and recreation.

58. Phase the development of the area to better address potential traffic and car parking problems that may arise from the increased number of visitors to the area.
59. Support the development of a seafood village and waterfront restaurants as an interim use at Punggol North.
60. Phase the development of the area to better address potential traffic and car parking problems that may arise from the increased number of visitors to the area.
61. Support the proposal for the sea sports centre at Punggol North.
62. Support having “play and stay” facilities at Punggol North. Study how costs for such facilities could be kept low and developments kept rustic.
63. Support the interim beach park at Punggol Point.
64. Soften the vertical retaining walls through landscaping where necessary.
65. Support activities for the more adventurous in Punggol North but suggest to replace the motorcross idea with mountain bike trails.
66. Support the proposal to convert the existing Punggol Road to a linear park linking the new town centre and the coast.
67. Support the “wilderness theme” for Coney Island. Basic amenities (e.g. water, sanitation) can be provided and located near the jetty. Pleasure boats should be allowed to dock at the jetty.
68. Free up the waterway for recreational uses by having only one bridge link to Coney Island.

### **Pasir Ris**

69. Support the proposal for a seaside pier. LIRA to study the location of the pier. Ensure that the parking situation is addressed before introducing the pier.

### **Changi Village**

70. Set up information kiosks and storyboards to showcase the rich cultural, historical and natural heritage of the Changi area.

71. Support the proposal to add new, small parcel commercial developments, but spruce up existing shops first, and take an incremental approach to adding new commercial developments to allow time to review impact on existing shops.
72. Design the proposed new commercial developments carefully so as to avoid too great a contrast between them and the existing older buildings.
73. The design of the new pedestrian mall should be linear and not dog-legged, in order to provide an unobstructed view of the waterfront.
74. Improve the connectivity between the beachfront and Changi Village. In particular, provide a connection for cyclists, e.g. by widening the bridge at Telok Paku Road.
75. Abandon the proposal for a road extension of Lorong Bekukong, but create a lively and vibrant pedestrian waterfront.
76. Support the proposal to relocate the People's Association (PA) Sea Sports Club, and to convert the vacated PA buildings to budget hostels.
77. Retain the launching ramp of the PA Sea Sports Club for public use.
78. Support the proposal for the children's playground.
79. Support the proposal to increase residents in the area.
80. Preserve historical places when new uses are found for them.

### **Pulau Ubin**

81. Appoint a single agency to spearhead the management of the island. NParks could be the agency since the general intention for Ubin is more in line with a rustic park and NParks is already managing a large portion of Pulau Ubin.
82. The appointed agency to form an advisory panel to advise and provide feedback on the plans and proposals for Pulau Ubin.
83. Support the proposed adaptive restoration of House No. 1 into an interpretative centre.
84. Restrict the number of motorised vehicles on the island. If needed, environmentally friendly forms of transport such as trishaws could be used.

85. The eastern coastline including Chek Jawa should be Category B access only.
86. Keep Temporary Occupation Licence (TOL) rates for Pulau Ubin low, to support the opening up of farms.
87. Attract people to run small-scale commercial enterprises and farms on Pulau Ubin.
88. Highlight the historical value of various places on Pulau Ubin and perhaps use this as a basis for educational guided tours and walks.
89. Support the proposal to use existing state-owned properties for Bed & Breakfast (B&B) and farm stay.
90. Relax the TOL requirement by SLA to allow the owners to rent out rooms to the public or for the adaptive reuse of the existing buildings on Pulau Ubin as B&B establishments.
91. If possible, complete the acquisition of partially acquired property if the owners do not wish to return to pursue any livelihood or residence on the island, so as to free them up for B&B uses.

### **Water Taxi Service**

92. Support the idea of a water taxi service to connect the various nodes in the Rustic Coast cluster.
93. The transportation means should not be high-speed boats but should remain the traditional bumboats currently in use.

*Source:* Urban Redevelopment Authority, 2004.

## RESPONSES TO SUBJECT GROUP (SG) ON PARKS & WATERBODIES PLAN

URA & NParks' Proposals	SG's Comments and Recommendations	URA & NParks' Responses
	<b>Making Nature Areas More Accessible — Northern Wetlands</b>	
<p>7.1.1.1.1.1 <i>Provide new nature parks next to Sungei Buloh mangroves.</i></p> <p><i>Buloh mangroves.</i></p>	<ul style="list-style-type: none"> <li>• Support the new nature parks next to Sungei Buloh mangroves and keep them as Category A to Category B open spaces.<sup>1</sup></li> <li>• Support camping at new nature parks if suitable sites are found, consideration must be given to waste management and minimising interference with the mangrove and its wildlife.</li> </ul>	<ul style="list-style-type: none"> <li>• The proposal will be incorporated into the Master Plan (MP) 2003 and implemented by NParks in the near future. The Kranji Nature Trail will be kept largely in its natural state and some basic facilities provided.</li> <li>• NParks will take into consideration the suitability of the sites before implementing any campsites.</li> </ul>
<p>Provide new nature park at Kranji Marshes.</p>	<ul style="list-style-type: none"> <li>• Support new nature park at Kranji Marshes and keep it as a Category A to Category B open space.</li> <li>• Provide a buffer along the shorelines of the Kranji Reservoir where possible.</li> </ul>	<ul style="list-style-type: none"> <li>• The proposal will be incorporated into the MP 2003. The new nature park will be kept largely in its natural state and some basic facilities e.g. nature trails.</li> <li>• Where it does not infringe on existing developments or compromise their operational requirements, a buffer along the shoreline of Kranji Reservoir can be considered by URA.</li> </ul>
<p>Provide a 5km boardwalk linking the Kranji marshes and Sungei Buloh mangroves.</p>	<ul style="list-style-type: none"> <li>• Support the proposed boardwalk but allow public access only to the southern 500m of the 2km PUB bund, and do not extend the boardwalk/trail across the Sungei Jelutong estuary to protect this particularly sensitive area.</li> </ul>	<ul style="list-style-type: none"> <li>• We agree with the SG's recommendation as it allows for public access while ensuring minimal impact on the existing flora and fauna.</li> <li>• NParks will study appropriate locations for the construction of hides along the reservoir edge.</li> </ul>



- Allow inland trails perpendicular to the mangrove coastline leading to the edge of the marsh.
- Study appropriate locations for hides to view birdlife along the reservoir edge.

Provide nature trails through Lim Chu Kang farmland.

- Support nature trails through Lim Chu Kang farmland for both recreational and educational value. The trails should be of Category B access.

Allow boating on Kranji Reservoir.

- Support non-motorised boating on Kranji Reservoir, organised by responsible operators. Boats should not go within 50m of the bund where access is restricted.
- URA will work with relevant agencies to identify responsible operators to facilitate the implementation of the non-motorised boating activities.

#### Making Nature Areas More Accessible — Central Catchment

Introduce more hiking trails and boardwalks; canopy walk and an observation tower; new lookout points on the waterfront; and continuous boardwalk linking Upper Peirce Reservoir to MacRitchie Reservoir.

- Support the proposed trails, boardwalks, canopy walks, and observation tower as shown in Parks and Waterbodies Plan. Care is to be taken to minimise disturbance to the flora and fauna. For different parts of the catchment, ease of access and infrastructure should be varied according to the eco-sensitivity of the areas.
- NParks to produce brochures and trail guides for the Central Catchment.
- The proposed trails boardwalks, canopy walk, and observation tower will be completed by 2004. NParks will take care to minimise disturbance to the flora and fauna and take into consideration the varying eco-sensitivity of different areas.
- There are already existing trail maps and NParks will continue to update and provide these for new trails.

*continued on next page*

URA & NParks' Proposals	SG's Comments and Recommendations	URA & NParks' Responses
<i>Interim Greens around the Central Catchment</i>		
<p>Interim Greens at Chestnut, Dairy Farm, Windsor Area and Old Upper Thomson Road Area.</p>	<p>• Support the interim greens at Dairy Farm, Windsor Area, and Old Upper Thomson Road, but propose to keep the entire Chestnut Interim Green as a permanent green.</p>	<p>• NParks will include interim greens as part of its plans. The Chestnut Interim Green will be retained in its natural state for as long as possible. But the SG's recommendation to keep it as a permanent green cannot be fully supported as the area may be needed for development in the long term. In the event that the area is needed for development, we will retain a 50m wide permanent green along the boundary of the Catchment to act as a green buffer to the Nature Reserve.</p>
<p>Introduce scenic road, eco-lodges, mountain biking course, hiking and cycling trails at the Chestnut Area Interim Green.</p>	<p>• Support the Chestnut Green and keep it as a Category A Open Space for adventure lovers.</p> <p>• The scenic drive and eco-lodge ideas are not supported.</p> <p>• Instead, introduce a scenic walking and cycling trail of Category B access.</p> <p>• The existing mountain biking course should also have Category B access and treatment.</p> <p>• Enhance the streetscape of Bukit Timah Expressway (BKE) to become the scenic road through this area.</p>	<p>• We support the recommendation to keep Chestnut Green natural. It will be taken into consideration in the detailed design of the trails.</p> <p>• We agree not to pursue the scenic drive proposal. Instead, we can consider improving the existing track to the Chestnut Interim Green to facilitate better pedestrian access. Signals can be put up to guide hikers and mountain bikers using the trails.</p> <p>• There are parts within the Chestnut Interim Green that are less wooded and can be considered for complementary recreational activities. Eco-lodging can be considered in areas, which are less wooded where there will be minimal impact on the existing environment.</p>

- Under the Streetscape Greenery Master Plan, the forest treatment will apply to the BKE.
- URA will work with NParks and other agencies to facilitate the implementation of the proposal.
- We support the recommendation to have minimal infrastructure and no building structures within the quarry area or close to the path leading to it, as it is in line with the intention to allow for recreational activities while keeping away from the sensitive areas. For example, an adventure camp can be planned outside the quarry area and nearer to existing developments.
- NParks will work with the relevant agencies on the management of the area.
- There are existing trail maps that indicate the linkages between trails in the Catchment and Bt Timah Nature Reserve.

Introduce adventure camps, corporate retreats, rock climbing, boating, hiking and cycling trails in the Dairy Farm Interim Green.

- Support the Dairy Farm Interim Green and keep it as a Category B Open Space.
- Support adventure camps, corporate retreats, rock climbing, boating, hiking, and cycling trails in the Dairy Farm Interim Green, but there should be no building structure within the quarry area or close to the path leading to it.
- NParks to be the managing agency for the entire Dairy Farm interim green.
- NParks to produce trail guides showing how the trails are linked to those in the Central Catchment Nature Reserve and Bukit Timah Nature Reserve.

#### *7.1.1.1.1.2 Windsor Interim Green*

- Support the Windsor Interim Green and keep it as a Category B open space.
- Develop the existing tree bank as an educational resource.
- NParks to produce trail maps to show how trails here are linked to those in the Central Catchment.
- Explore with Singapore Island Country Club to allow reasonable public access along the fringe of the golf course or other alternative ways to access the Central Catchment.

- We support the recommendations to develop the existing tree bank as an educational resource. This will be implemented by NParks.
- URA will work with NParks to explore various possible access points to the Central Catchment from the Windsor Interim Green.

*continued on next page*

URA & NParks' Proposals	SG's Comments and Recommendations	URA & NParks' Responses
7.1.2 <i>Urban and Town Parks — Waterfront Parks</i>		
7.1.3 <i>Urban and Town Parks — Waterfront Parks</i>		
<p><b>7.1.3.1.1.1</b> <i>Open up four new waterfront parks:</i></p> <ul style="list-style-type: none"> <li>• Coney Island</li> <li>• Lower Seletar Reservoir Park</li> <li>• Jurong Lake Park and</li> <li>• Tampines Quarry Park</li> </ul>	<p>Support the proposed waterfront parks at Coney Island, Lower Seletar Reservoir Park, Jurong Lake Park, and Tampines Quarry Park.</p> <p>For Lower Seletar Reservoir Park:</p> <ul style="list-style-type: none"> <li>• Support the Lower Seletar Reservoir Park. Ensure good connectivity between the existing park and the new park extension along the lower Seletar Reservoir waterfront.</li> <li>• Study feasibility of providing a pedestrian connection between Yishun Stadium and the existing Lower Seletar Reservoir.</li> <li>• Allow public access along Sungei Seletar, where it does not compromise existing uses.</li> </ul> <p>For Tampines Quarry Park:</p> <ul style="list-style-type: none"> <li>• Support Tampines Quarry Park and keep it as a Category B open space. Provide a simple trail around the quarry and some park benches and lookout points.</li> </ul>	<ul style="list-style-type: none"> <li>• The proposal will be incorporated in the MP2003. For a start, Coney Island will be turned into a wilderness park.</li> <li>• The proposal will be incorporated in the MP2003.</li> <li>• NParks and URA will study with LTA and HDB how to provide a suitable pedestrian connection to facilitate better access between Yishun Stadium and the park.</li> <li>• URA and NParks will study the possibility of connecting Lower and Upper Seletar Reservoir Parks without compromising the existing uses.</li> <li>• The proposal will be incorporated in the MP2003.</li> </ul>

7.1.3.2  
7.1.3.3 *Urban and Town Parks — New Parks*

Develop five new parks:

- Sengkang Park
- Woodlands Regional Park
- Bidadari Park
- Tampines Linear Park
- Jurong West Park

- Support the proposed Sengkang Park, Woodlands Regional Park, Bidadari Park, Tampines Linear Park, and Jurong West Park.

For Sengkang Park:

- Look for ways to maximise access from the proposed sports stadium to the waterfront.
- Landscape the edges of Punggol River in order to soften the banks and make it look more natural.

For Woodlands Regional Park:

- Tidy up land use along the coastal promenade and bring in activities designed to attract people to use the area for recreation.

- The proposals will be incorporated in the MP2003. In both the Woodlands Regional Park and Sengkang Park, the riverine vegetation will be retained and enhanced as part of the identity of the parks.

- NParks will work with Singapore Sports Council to maximise access from the sports stadium to the waterfront.
- In designing Sengkang Park, NParks will take into consideration the landscaping of the riverbanks.
- We support the recommendation to tidy up the uses along the coastline. URA will look into how to implement this.

7.1.3.4  
7.1.3.5 *Urban and Town Parks — Enlarging Selected Parks*

Enlarge selected parks:

- Pasir Ris Park
- East Coast Park
- Labrador Park
- Choa Chu Kang Town Park
- Zhenghua Park
- Bukit Batok Park

- Support the proposed park extensions at Pasir Ris Park, East Coast Park, Labrador Park, Chao Chu Kang Town Park, Zhenghua Park, and Bukit Batok Park.
- The proposals will be incorporated in the MP2003.

*continued on next page*

URA & NParks' Proposals	SG's Comments and Recommendations	URA & NParks' Responses
<p>Join our parks through a comprehensive green network. The challenge is to extend our park connectors from 40km today by another 120km by 2015. The comprehensive green network will join parks, and can be extended to link our park connectors with town centres, sports complexes and homes.</p>	<p style="text-align: center;"><i>7.1.4</i></p> <p><i>7.1.5 Park Connectors</i></p> <ul style="list-style-type: none"> <li>• Support the proposed Park Connector Network, and suggest an additional park connector from Woodlands Town to Mandai Road through Ulu Sembawang.</li> <li>• Plan park connectors upfront to ensure that land is set aside for them at the outset.</li> <li>• Explore innovative approach to achieve seamless connections, e.g. grade separated or layered interchanges.</li> <li>• Make our city and towns pedestrian friendly and give equal emphasis to pedestrians and vehicles.</li> </ul>	<ul style="list-style-type: none"> <li>• The park connectors will be incorporated in the MP2003 and will be developed progressively over the next fifteen years. We will study the feasibility of the park connector through Ulu Sembawang proposed by the SG.</li> <li>• Park connectors are planned upfront. The Parks &amp; Waterbodies Plan is an example where the park connector network up to 2015 has been planned and will be incorporated in the MP2003 to facilitate their implementation.</li> <li>• URA &amp; NParks will work with HDB, LTA and other relevant agencies in the planning and implementing of park connectors to provide better connectivity and will continue to review innovative ideas such as grade separated or layered interchanges.</li> </ul>
<p>Design an integrated environment, and apply different streetscape treatments according to the context of the streets. Link up Heritage Roads to provide a continuous experience of lush streetscape greenery.</p>	<p style="text-align: center;"><i>7.1.6</i></p> <p><i>7.1.7 Streetscape Greenery</i></p> <ul style="list-style-type: none"> <li>• Support the proposal to design an integrated environment, and apply different treatments according to the context of the streets.</li> <li>• Support the proposal to link up Heritage Roads to provide a continuous experience of lush streetscape greenery.</li> </ul>	<ul style="list-style-type: none"> <li>• URA and NParks will work with the relevant agencies to realise the proposals.</li> </ul>

## 7.1.8

*Skyrise Greenery*

**7.1.8.1.1.1** *Encourage skyrise greenery through facade greenery, landscaped roof terraces, sky terraces and balconies, sky bridges and lobbies.*

- Support the proposal to encourage skyrise greenery.
  - Explore further Gross Floor Area (GFA) exemption incentives to encourage skyrise greenery.
- URA has recently announced the exemption of GFA for covered communal areas and shadow areas for all developments which will encourage a more generous provision of covered landscaped communal areas and greenery. This would also provide more flexibility to facilitate interesting building designs and enhance pedestrian linkages.

**Other SG's Suggestions for the Parks & Waterbodies Plan**

**Diversity of parks and nature areas**

- Categorise our parks into three categories, according to ease of access, type of facilities and degree of landscaping:
  - i Category A — natural areas to be kept pristine, with existing trails left untouched. Discreet directional signs may be put up to mark the entrance to the trails;
  - ii Category B — wilderness areas with some basic facilities to facilitate access and usage, such as toilets, shelters and formal tracks e.g. Bukit Timah Nature Reserve; and
  - iii Category C — green spaces such as public parks, with landscaping and facilities for routine family use, e.g. town parks.
- We support the recommendation to have a diversity of open spaces and a variety of park experiences. In implementing the new open spaces and parks, consideration will be given to the level of access and types of facilities to ensure a diversity and variety of park experiences.

*continued on next page*

URA & NParks' Proposals	SG's Comments and Recommendations	URA & NParks' Responses
	<p><b>Identity and educational opportunities in parks</b></p> <ul style="list-style-type: none"> <li>• Develop identity in parks through retaining geographical, cultural, historical features, and taking into account the original land uses of the place. Plan parks around such places.</li> <li>• In clearing land for development and when building infrastructure, such as roads and drains, minimise impact on the existing landscape and avoid destroying unique features of identity in the area.</li> <li>• Use parks as educational opportunities and let parks become places for visits apart from being merely spaces for local residents to use.</li> </ul>	<ul style="list-style-type: none"> <li>• We support the SG's recommendations. In the planning of future new towns, we will try to incorporate unique natural and historical features and nodes of identity. This is in line with the identity plan where identity nodes that are identified will be retained. One way of retaining them is by integrating them in the planning and design of new town parks.</li> <li>• NParks has been developing educational programmes for its parks, and will continue to do so in the design of future parks.</li> </ul>
	<p><b>Canalisation of natural rivers</b></p> <ul style="list-style-type: none"> <li>• Keep natural banks of rivers as natural, and where possible, avoid canalising these rivers, or apply aesthetic treatment.</li> </ul>	<ul style="list-style-type: none"> <li>• URA and NParks will study with PUB to see if the existing natural rivers could be left un-canalised for as long as possible, or aesthetically treat them if they need to be upgraded.</li> </ul>
	<p><b>Heritage Roads</b></p> <ul style="list-style-type: none"> <li>• Extend width of green buffer for Category A Heritage Road from the existing 10m to 20m.</li> <li>• Keep the first 10m width of Category A Heritage Road as State Land and open to public access.</li> <li>• Consider giving the green part of Mandai Road Heritage Road status.</li> </ul>	<ul style="list-style-type: none"> <li>• The recommendation for additional buffer land beyond the existing 10m green buffer will have to be studied further. SG's proposal to keep the first 10m as State land is possible where it forms part of a linear park e.g. Punggol Road.</li> </ul>



- Include for consideration as Heritage Roads, beautiful tree-lined streets, e.g. Mount Rosie, even if they are adjoining private properties. These may be subject to different buffer requirement in order not to compromise development potential.
- Provide pedestrian access on Heritage Roads.
- NParks will evaluate Mandai Roads merit as a Heritage Road.
- URA will study with NParks whether roads adjoining private properties can be considered for evaluation as Category A Heritage Roads. This is provided the buffer to be imposed does not severely compromise the development potential of the site.
- Pedestrian access can be provided where possible.

**MINDEF training areas**

- MINDEF to explore opening up selected training land, on selected days of the year, for the public to enjoy the natural open spaces.
- URA and NParks will study with MINDEF whether the proposal is feasible without compromising MINDEF's operational needs.

**RESPONSES TO SUBJECT GROUP (SG) ON THE RUSTIC COAST CLUSTER OF THE IDENTITY PLAN**

URA's Proposals	SG's Comments and Recommendations	URA's Responses
Turn Punggol Point into a paradise for sea sports and recreation.	<p style="text-align: center;"><i>7.1.8.2</i></p> <p style="text-align: center;"><b>Punggol Point and Coney Island</b></p> <ul style="list-style-type: none"> <li>• Support turning Punggol Point into a paradise for sea sports and recreation.</li> <li>• Phase the development of the area to better address potential traffic and car parking problems that may arise from the increased number of visitors to the area.</li> </ul>	<ul style="list-style-type: none"> <li>• We support the phased approach. It can be implemented by releasing smaller plots of land for interim use progressively. URA will work with the relevant agencies to tender out these sites to interested operators on an interim basis.</li> </ul>

*continued on next page*

URA's Proposals	SG's Comments and Recommendations	URA's Responses
<p>Re-introduce seafood dining in the form of a seafood village and waterfront restaurants as an interim use until such time Punggol North is developed.</p>	<ul style="list-style-type: none"> <li>Support the development of a seafood village and waterfront restaurants as an interim use at Punggol North.</li> <li>Phase the development of the area to better address potential traffic and car parking problems that may arise from the increased number of visitors to the area.</li> </ul>	<ul style="list-style-type: none"> <li>Interim surface car parks can be provided where possible to cater to these developments. URA will continue to work with LTA to address any traffic issues.</li> <li>URA will work with relevant agencies to tender out these sites to interested operators on an interim basis.</li> <li>Interim surface carparks can be provided where possible to cater to these developments. URA will work with LTA to address traffic issues.</li> </ul>
<p>Develop and lease out parcels of land along the coastline for interim water and beach sports. A sea sports centre for wakeboarding and other waterfront sports can be introduced.</p>	<ul style="list-style-type: none"> <li>Support the proposal for the sea sports centre.</li> </ul>	<ul style="list-style-type: none"> <li>URA will work with relevant agencies to release suitable sites to interested operators on an interim basis.</li> </ul>
<p>Introduce play and stay accommodation.</p>	<ul style="list-style-type: none"> <li>Support having play and stay facilities.</li> <li>Study how costs for such facilities could be kept low and developments kept rustic.</li> </ul>	<ul style="list-style-type: none"> <li>URA will study the feasibility of tendering out these sites on shorter leases to keep costs low and designs rustic.</li> </ul>
<p>Create an interim beach park on the reclaimed land at Punggol Point, where there is a small stretch of sandy beach.</p>	<ul style="list-style-type: none"> <li>Support the interim beach park at Punggol Point.</li> <li>Soften the vertical retaining walls through landscaping where necessary.</li> </ul>	<ul style="list-style-type: none"> <li>URA will study the feasibility of softening the vertical retaining walls and will work with NParks on the implementation of the interim park and landscaping of the waterfront.</li> </ul>

<p>Introduce a mountain bike and motorcross trail on a short-term basis to cater to the more adventurous.</p>	<ul style="list-style-type: none"> <li>• Support activities for the more adventurous in Punggol North but suggest to replace motorcross with bicycle trails.</li> </ul>	<ul style="list-style-type: none"> <li>• We support the SG's suggestion to replace motorcross with bicycle trails.</li> </ul>
<p>Retain the existing Punggol Road and convert it to a linear park in the future, with a cycling, jogging and walking track linking the future Punggol Stadium and the town centre to the coast.</p>	<ul style="list-style-type: none"> <li>• Support the proposal to convert the existing Punggol Road to a linear park linking the new town centre and the coast.</li> </ul>	<ul style="list-style-type: none"> <li>• The proposal will be incorporated into the MP2003.</li> </ul>
<p>Adopt a "wilderness" theme for Coney island. Sites for camping, small rental huts and basic amenities can be developed along this theme.</p>	<ul style="list-style-type: none"> <li>• Support the "wilderness theme" for Coney Island. Basic amenities (water, sanitation) can be provided and located near the jetty. Pleasure boats should be allowed to dock at the jetty.</li> <li>• Free up the waterway for recreational uses by having only one bridge link to Coney Island.</li> </ul>	<ul style="list-style-type: none"> <li>• We support the SG's suggestion to provide basic facilities on Coney Island. NParks will consider how amenities could be added on over time.</li> <li>• We will assess whether the proposal for one bridge is feasible taking into consideration the proposed road networks and future developments on Coney Island.</li> </ul>
<p><b>Pasir Ris</b></p>		
<p>Introduce a seaside pier which can be developed as a recreational and commercial destination, providing entertainment, F&amp;B and retail over the water.</p>	<ul style="list-style-type: none"> <li>• Support the proposal for a seaside pier. URA to study the proposal to shift the location of the pier.</li> <li>• Ensure that the parking situation is addressed before introducing the pier.</li> </ul>	<ul style="list-style-type: none"> <li>• URA will study the location of the pier in relation to existing developments and amenities along Pasir Ris Park and work with LTA to address the parking situation.</li> </ul>

*continued on next page*

URA's Proposals	SG's Comments and Recommendations	URA's Responses
	<p data-bbox="242 819 302 971">7.1.8.2.1.1.1.1 Changi Village</p>	
	<ul data-bbox="334 752 422 1273" style="list-style-type: none"> <li>• Set up information kiosks and storyboards to showcase the rich cultural, historical, and natural heritage of the Changi area.</li> </ul>	<ul data-bbox="334 181 422 702" style="list-style-type: none"> <li>• We support the SG's recommendation. Information kiosks and storyboards can be set up at the new ferry terminal and other appropriate locations.</li> </ul>
<p data-bbox="443 1349 527 1622">Introduce new small parcel shophouses to build critical mass for the area.</p>	<ul data-bbox="443 752 530 1273" style="list-style-type: none"> <li>• Support the proposal to add new, small parcel commercial developments, but spruce up existing shops first, and take an incremental approach to add new commercial space to allow time to review impact on existing shops.</li> <li>• Design the proposed new commercial developments carefully so as to avoid too great a contrast between them and the existing older buildings.</li> </ul>	<ul data-bbox="443 181 530 702" style="list-style-type: none"> <li>• URA will consider adopting an incremental approach when adding new commercial space.</li> <li>• URA will consider the context of existing buildings when proposing guidelines for the new developments.</li> </ul>
<p data-bbox="551 1298 834 1622">Improve pedestrian connectivity through a pedestrian mall and promenade along the creek.</p>	<ul data-bbox="551 752 723 1273" style="list-style-type: none"> <li>• The design of the new pedestrian mall should be linear and not dog-legged, in order to provide an unobstructed view of the waterfront.</li> <li>• Improve the connectivity between the beachfront and Changi Village. In particular, provide a connection for cyclist, e.g. by widening the bridge at Telok Paku Road.</li> </ul>	<ul data-bbox="551 181 723 702" style="list-style-type: none"> <li>• URA will consider the SG's recommendation on the alignment and also take into account the view of the waterfront in the design of the new pedestrian mall.</li> <li>• URA will study how the pedestrian and cycling connection from Changi Village to Changi Beach can be improved.</li> </ul>

<p>Improve vehicular connectivity in the form of an extension of Lorong Bekukong along the creek to Telok Paku Road.</p>	<ul style="list-style-type: none"> <li>• Abandon the proposal for a road extension of Lorong Bekukong, but create a lively and vibrant pedestrian waterfront.</li> </ul>	<ul style="list-style-type: none"> <li>• URA will drop the proposed road extension of Lorong Bekukong along the creek and study how to further improve pedestrian linkage between Changi Village and Changi Beach.</li> </ul>
<p>Relocate the People's Association (PA) Adventure Club to bring the club closer to the sea and convert the vacated PA buildings to budget hostels.</p>	<ul style="list-style-type: none"> <li>• Support the proposal to relocate the PA Sea Sports Club, and to convert the vacated PA buildings to budget hostels.</li> <li>• Retain the launching ramp of the PA Sea Sports Club for public use.</li> </ul>	<ul style="list-style-type: none"> <li>• URA supports the SG's suggestion. We will look into retaining the launching ramp for public use when the Sea Sports Club is relocated.</li> </ul>
<p>Build a new children's playground.</p>	<ul style="list-style-type: none"> <li>• Support proposal for the children's playground.</li> </ul>	<ul style="list-style-type: none"> <li>• NParks will develop the new children's playground.</li> </ul>
<p>Increase the residential quantum in the area. URA proposes to sell the parcels to the west of the village for Residential use as part of the Government Land Sales programme. The parcels will be sub-divided into smaller plots to relate to the character of the immediate areas and allow smaller developers to participate.</p>	<ul style="list-style-type: none"> <li>• Support proposal to increase residents in the area.</li> <li>• Preserve historical places when new uses are found for them.</li> </ul>	<ul style="list-style-type: none"> <li>• URA will work with the relevant agencies to tender out sites for Residential use.</li> <li>• URA agrees that there are buildings and places of historical interest in Changi Point and will study how they can be retained.</li> </ul>

*continued on next page*

URA's Proposals	SG's Comments and Recommendations	URA's Responses
<b>Pulau Ubin</b>		
<p>Develop an Interpretative Centre at No 1 Pulau Ubin, which can serve as a base for nature trails and tours to be conducted to the various habitats.</p>	<ul style="list-style-type: none"> <li>• Appoint a single agency to spearhead the management of the island. NParks could be the agency since the general intention for Ubin is more in line with a rustic park and NParks is already managing a large portion of Pulau Ubin.</li> <li>• The appointed agency to form an advisory panel to advise and provide feedback on the plans and proposals for Pulau Ubin.</li> </ul>	<ul style="list-style-type: none"> <li>• URA and NParks will work with relevant agencies to study these ideas further.</li> </ul>
<p>Open local plantations such as durian and rubber, as well as vegetable and prawn farms to the public for recreational and educational purposes.</p>	<ul style="list-style-type: none"> <li>• Support the proposed adaptive restoration of House No. 1 into an Interpretative Centre.</li> <li>• Restrict the number of motorised vehicles on the island. If needed, environmentally friendly forms of transport such as trishaws could be used.</li> <li>• The eastern coastline including Chek Jawa should be Category B access only.</li> </ul>	<ul style="list-style-type: none"> <li>• NParks will include the adaptive restoration No. 1 Pulau Ubin into an Interpretative Centre into its plan for the island.</li> <li>• URA will study the need to restrict vehicular traffic with LTA.</li> <li>• Currently, Chek Jawa is managed by NParks and the visitorship is controlled. Most parts of the remaining eastern coastline are under NParks management and only basic facilities are provided.</li> </ul>
<p>Open local plantations such as durian and rubber, as well as vegetable and prawn farms to the public for recreational and educational purposes.</p>	<ul style="list-style-type: none"> <li>• Keep Temporary Occupation Licence (TOL) rates for Pulau Ubin low, to support the opening up of farms.</li> <li>• Attract people to run small-scale commercial enterprises and farms on Pulau Ubin.</li> </ul>	<ul style="list-style-type: none"> <li>• URA will consider and study these ideas further with the relevant agencies.</li> <li>• NParks has taken into account the historical value of various places when conducting educational tours and walks, and will continue to expand on such programmes.</li> </ul>

- Highlight the historical value of various places on Pulau Ubin and use this as a basis for educational guided tours and walks.
  - Support the proposal to use existing state-owned properties for B&Bs and farm stay.
  - Relax the TOL conditions to allow existing owners to rent out rooms to the public or for the adaptive reuse of the existing buildings on Pulau Ubin as B&B establishments.
  - If possible, complete the acquisition of partially acquired property if the owners do not wish to return to pursue any livelihood or residence on the island, so as to free them up for B&B uses.
- 

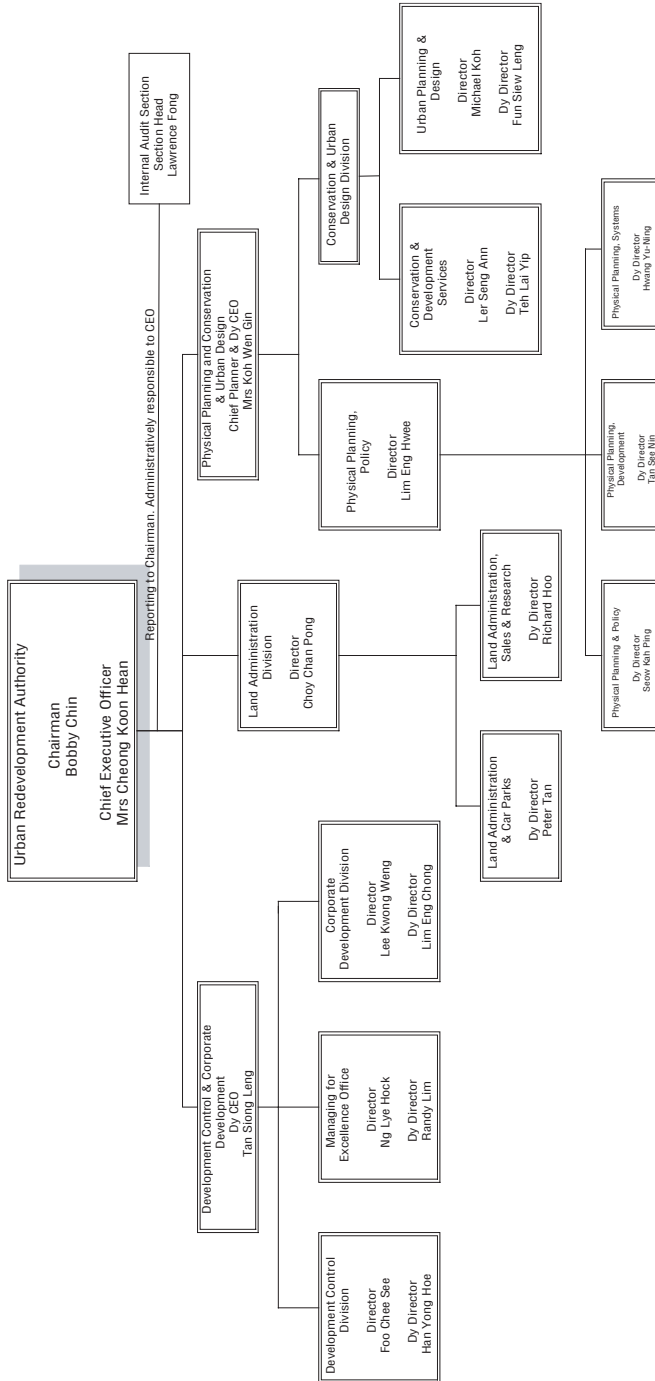
**Water Taxi Service**

- Support the idea of a water taxi service to connect the various nodes in the Rustic Coast cluster.
  - The transportation means should not be high speed boats but should remain as the traditional bum boats currently in use.
  - URA will explore with the existing bum boat operators to provide the water taxi service.
- 

**Note**

1 One of the new ideas is to categorize parks according to ease of access, type of facilities and degree of landscaping (see Section 8 of this table, pp. 323–38). Category A parks would be kept pristine, Category B parks would be kept as wilderness areas with basic facilities, while Category C parks would have landscaping and facilities for family use.

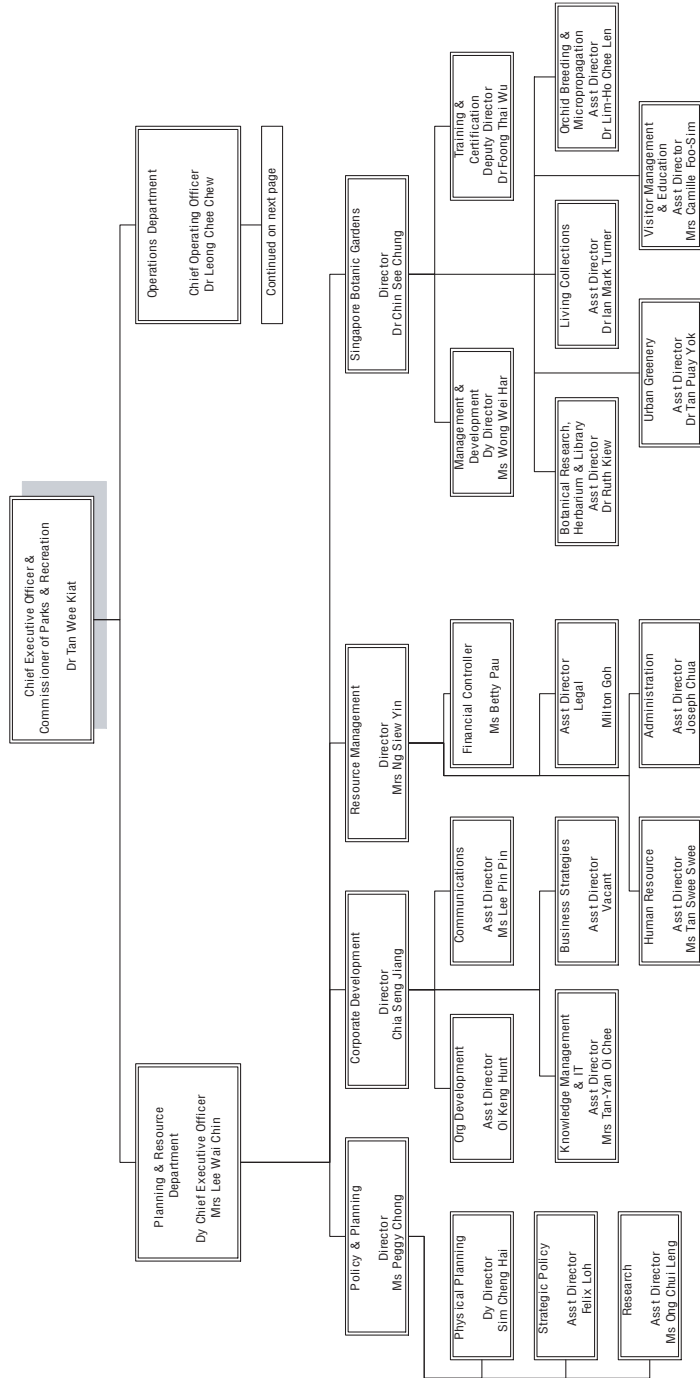
**APPENDIX V: URBAN REDEVELOPMENT AUTHORITY ORGANIZATION STRUCTURE**



Source: Urban Redevelopment Authority, 2004.

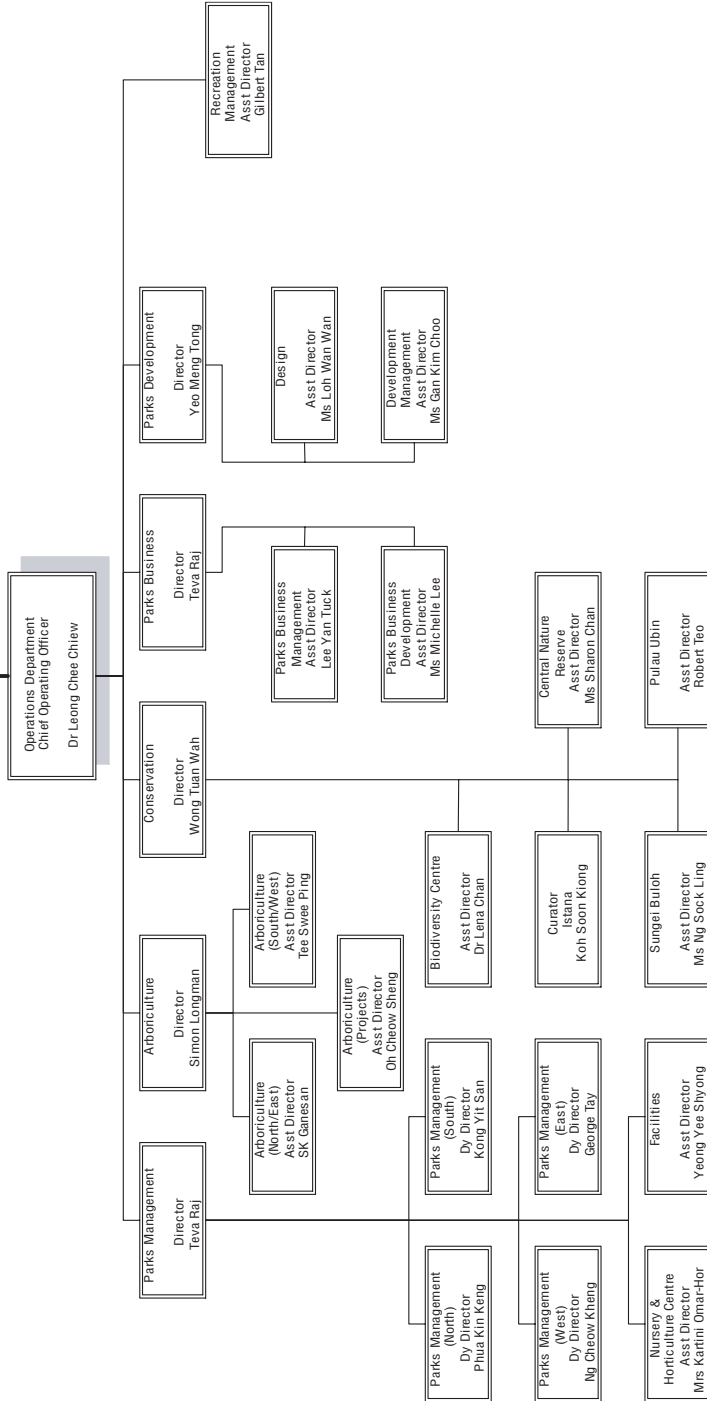


# APPENDIX VI: NATIONAL PARKS BOARD ORGANIZATION STRUCTURE



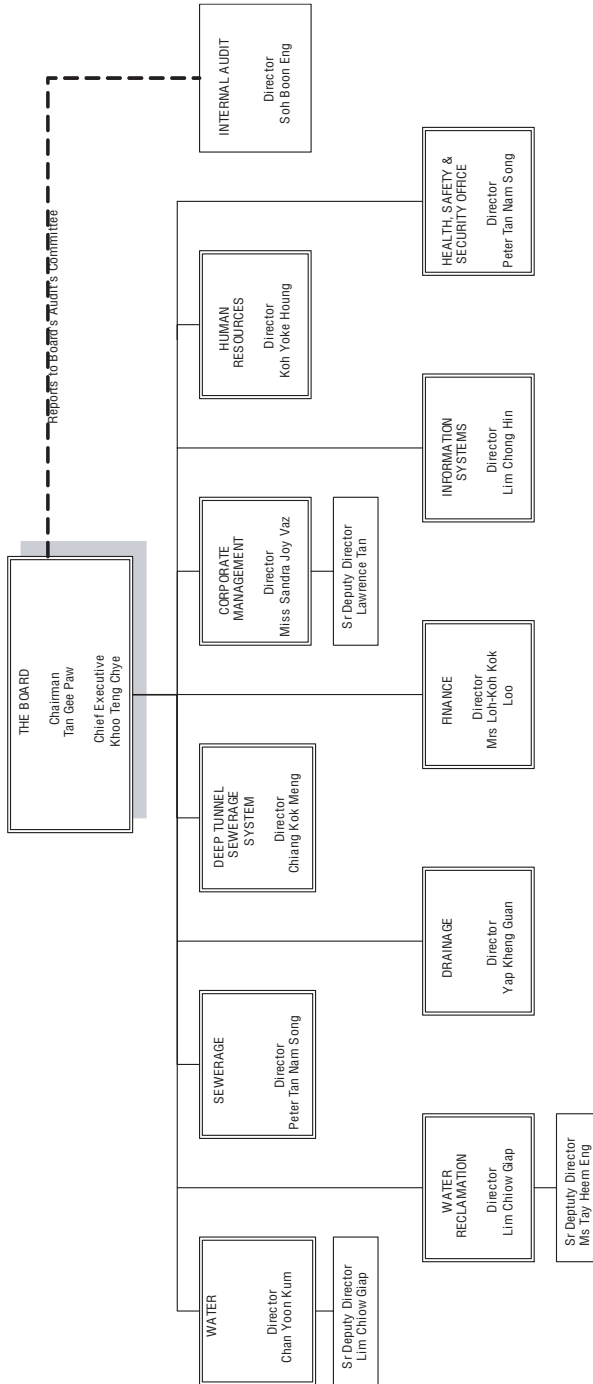
**NATIONAL PARKS BOARD ORGANIZATION STRUCTURE (Cont'd...)**

(Continued from previous page)



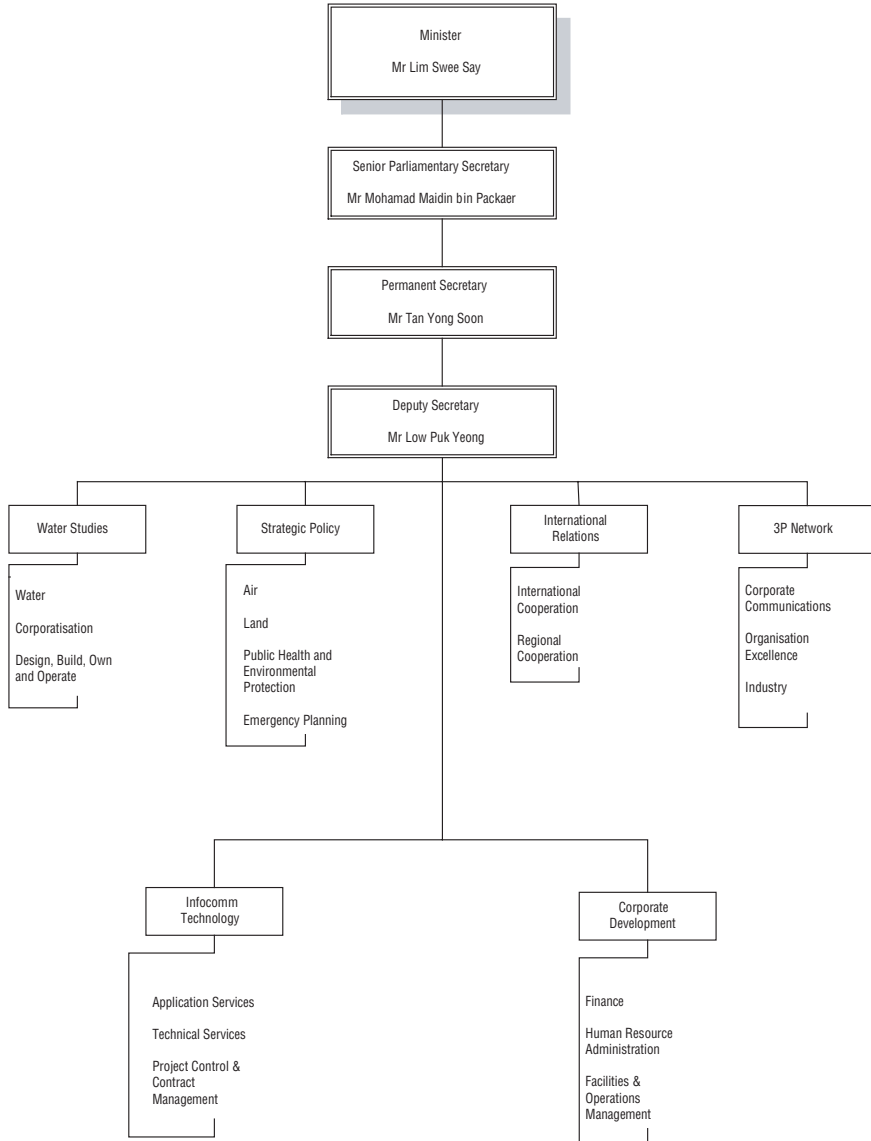
Source: National Parks Board, 2004.

**APPENDIX VII: PUBLIC UTILITIES BOARD ORGANIZATIONAL CHART**



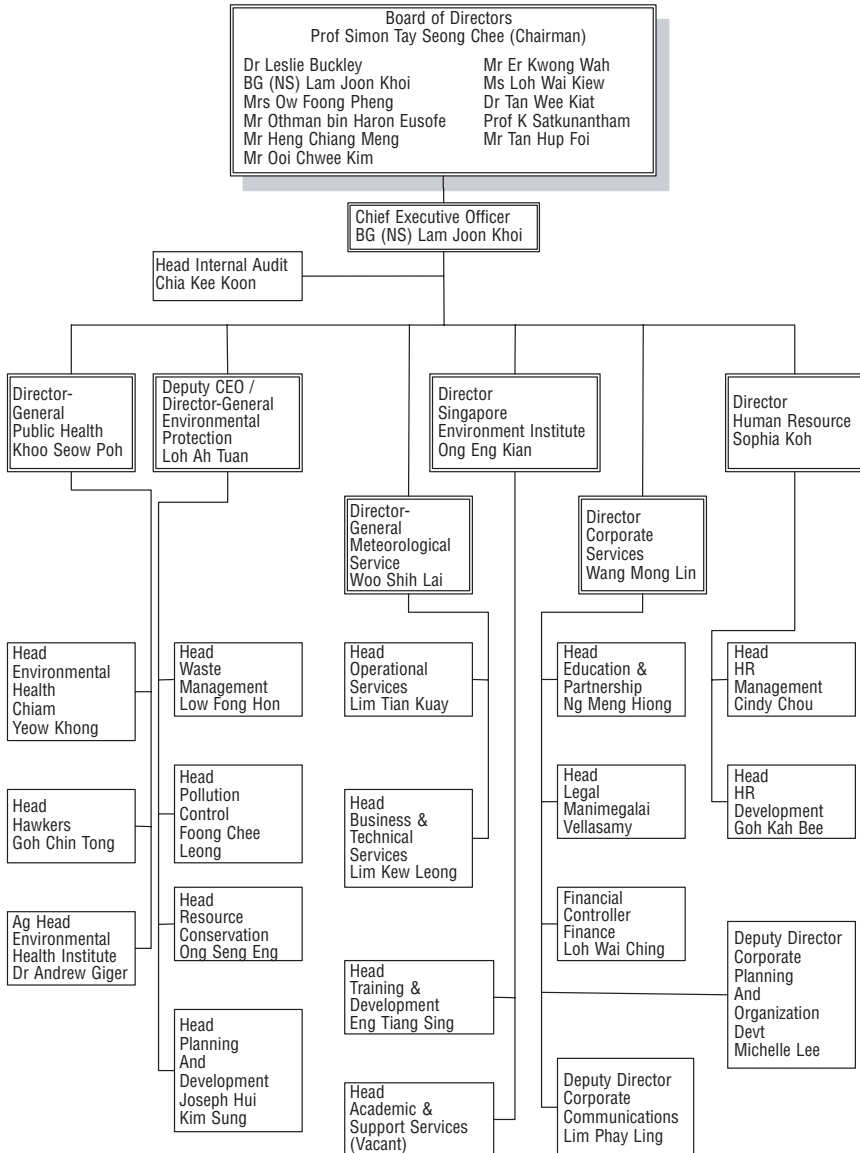
Source: Public Utilities Board, 2004.

## APPENDIX VIII: MINISTRY OF THE ENVIRONMENT ORGANIZATIONAL CHART



*Source:* Ministry of the Environment, 2004.

## APPENDIX IX: NATIONAL ENVIRONMENT AGENCY ORGANIZATIONAL CHART



Source: National Environment Agency, 2004.

## APPENDIX X: REMAKING SINGAPORE COMMITTEE RECOMMENDATIONS AND GOVERNMENT RESPONSES

### Remaking Singapore Committee Recommendations Overview of Government Response (15 April 2004)

No.	Recommendation	Status
<b>Chapter 2: A Home for All Singaporeans</b>		
1	Renew vision of a Singaporean Singapore	Accepted. The concept is and should be supported, both by government and community efforts. However, there is no need to formalise this into a statement.
2	Encourage greater identification with, and use of, National Symbols	Accepted and implemented
3	Renewed emphasis on values and ideals for which Singapore stands	Accepted. To be implemented as part of ongoing enhancements to NE programme.
4	Enhance National Education in schools and Institute of Higher Learning	
5	Set up Self-Help Co-ordination Council	Accepted. CEOs of the Self-Help Groups are working out the implementation details.
6	Introduce multi-ethnic religious education in schools	Not accepted. MOE has highlighted likely implementation problems, drawing from its experience with religious knowledge in the 1980s.
7	Language Competencies	
	a. flexibility for second language	a. Not accepted. However, MOE has announced several strategies to sustain and maintain interest in the mother tongue.
	b. option of local language as 3 <sup>rd</sup> language	b. Accepted. The eligibility criterion has been relaxed with effect from the 2003 PSLE cohort.
	c. 3 <sup>rd</sup> language at conversational level, non examinable	c. Accepted, but should be optional.
8	Public education on religion	
	a. Undertake proactive programmes to promote better understanding of people of different religions.	a. Accepted. Implemented through ongoing PA and IRCC initiatives.
	b. Declaration on Religious Harmony to consolidate current practices and consensus, not as a way to define OB markers.	b. Not accepted. The Declaration on Religious Harmony is intended as a statement of principles and norms to foster better understanding and consensus, not as a way to define OB markers.

No.	Recommendation	Status
9	Socialisation in SAP schools. Create awareness that SAP schools can also accept non-Chinese students who meet their entry criteria.	Accepted. The entry criteria for all national schools, including SAP schools, are transparent and do not discriminate against a student's race.
10	Religious schools to have integrative elements.	MUIS supports this recommendation as it is in line with the direction for the <i>madrasahs</i> .
11	Role of media in enhancing racial and religious harmony	Accepted. Implemented through existing channels of MITA/MDA and the programmes/publications advisory committee.
12	Up-stream integration for foreign students and skilled working adults a. Widen the reach of the buddy programme b. Encourage foreign clubs to take on joint community projects	a. Accepted. Schools with foreign students have in place a variety of programmes to integrate them into our system, and MCDS and MOM will study other ways to improve integration. b. Accepted and being implemented. Accepted and being implemented.
13	Address Singaporeans' concerns. Integration efforts should have ground-level involvement and ownership.	Accepted and being implemented.
14	Help Singaporeans acquire "global skills" by setting up a committee to globalise Singaporeans.	Accepted. Instead of a Committee mechanism, this will be undertaken by the Workforce Development Agency. WDA will identify such skills and incorporate them into new skills training programmes.
15	Re-think representation and franchise by creating NMPs for overseas Singaporeans, and "overseas constituencies".	Not accepted for now. The government would prefer to move gradually, starting with overseas voting.
16	Re-integrate returning Singaporeans	There is a set of existing programmes and policies.
17	Replicate the Singapore education experience for overseas Singaporeans by setting up Singapore schools.	Accepted. MOE is prepared to set up Singapore international schools overseas where there is a critical mass of Singaporeans, subject to the constraints of cost and availability of resources e.g. teachers.

*continued on next page*

No.	Recommendation	Status
18	Allows schools and universities greater flexibility to admit students	Accepted. MOE announced during March 2004 Budget Debate that it had introduced more flexible criteria for schools and JCs in admitting students. Universities will also be given greater autonomy in admissions.
19	Broadening the definition of success-entry in IHLs in Singapore	
20	Enhance diversity of the school curriculum through elective modules	The elective modules as recommended by the RSC, are already incorporated into our existing total curriculum framework, albeit mainly as non-examinable subjects and CCA.
21	Start a National School for the Arts and Music at secondary level	Accepted. MITA announced setting up of a pre-tertiary Independent Arts School in Parliament on 13 March 2004.
22	Improve access to quality early childhood education	Accepted. Implemented via ongoing initiatives and programmes.
23	Introduce O-level PE subject	Not accepted for now, as specialized independent schools are in a better position to cater to specialized areas, and the sports school is now just in start-up phase. But can be considered at appropriate time.
24	CCA recognition for outside school activities	Accepted. Students' participation in CCA outside the school is recognized, and CCA points are awarded for such involvement.
25	Provide access to coaching/counselling for students	Accepted. Implemented via ongoing initiatives and programmes.
26	Modification of the school ranking system	Accepted MOE announced during the March 2004 Budget Debate that it would broaden and augment the school ranking system.
<b>Chapter 3 — A Home Owned</b>		
27	Adopt a green/red lane approach for public entertainment licensing	Not accepted. But MITA and MHA will continue to review the exemption list with a view to exempting other public entertainments from the requirements of the Public Entertainments and Meetings Act.



No.	Recommendation	Status
28	Designate performance venues for relaxing rules	Not accepted. It is not practical to create such venues.
29	Review treatment of Performance and Forum Act	Accepted and implemented
30	Set up PEMA appeals advisory committee	Accepted and being implemented
31	Cease prior vetting of play scripts	Accepted. Exemption guidelines being worked out
32	Relax rules of busking	Accepted and implemented
33	Extend rating system to more forms of media	Accepted
34	Define “political” OB markers	Not accepted. DPM Lee addressed this point in a speech on 6 January 2004.
35	Encourage academic research on public policy	Accepted. Academics in NUS are strongly encouraged to conduct rigorous and relevant research in various fields, including public policy.
36	Easier registration of groups/ associations	Accepted. The Societies Act will be amended to implement an “Automatic Registration” regime for societies. The Societies (Amendment) Bill will be tabled in Parliament shortly.
37	One-stop registration	Accepted. Information and links available on NVPC and NCSS websites.
38	Set up a National Youth Forum	Accepted. A six-member Steering Committee was formed in November 2003.
39	Draw up a government Code of Consultation	Accepted. DPM Lee announced a set of guidelines on 6 January 2004.
40	Set up Management Committees to the manage HDB estates	Accepted in principle. However, various issues have to be studied further and resolved before the idea is extended from HUDC estates to other HDB residents at an appropriate time.
<b>Chapter 4 — A Home For All Seasons</b>		
41	To rationalize and consolidate the different assistance schemes into an “Economic Relief Scheme” (ERS) to provide holistic assistance for the structurally unemployed.	Accepted and being implemented

*continued on next page*

No.	Recommendation	Status
42	Allow the use of CPF in a prolonged recession, on a very limited and exceptional basis, so that Singaporeans can support themselves through spells of unemployment.	Accepted, but only for prolonged and severe economic downturns. The better approach is to help the unemployed be more employable and find a job.
43	Allow re-mortgage of HDB flats to meet urgent cash requirements. Explore other means of helping financially-strapped Singaporeans.	Not accepted. The government has other measures to help lessees in financial difficulties.
44	Expand the role of health insurance in healthcare financing. Initiatives to provide better coverage.	Accepted. MOH is studying how this can be implemented.
45	Extend the Primary Care Partnership Scheme to the disabled and chronically ill so that they can obtain subsidised treatment.	Accepted. MOH is working out implementation details for the disabled. For the chronically ill, a pilot project has started in two polyclinics and MOH will extend it to more polyclinics before considering inclusion of GPs.
46	Eligibility criteria of assistance schemes. Adopt a graduated scale of eligibility, as opposed to sharp cut-off points.	Accepted in principle and being implemented where feasible.
47	MOE to play a more active role in special education e.g. research and planning, identify more primary schools where facilities are available for the disabled to study in.	MOE works with NCSS and VWOs under the 'Many Helping Hands' approach in the area of special education.
48	Set up a National Council on Accessibility to coordinate efforts at improving accessibility and to champion the physical accessibility needs of the less mobile.	Supported. If such an NGO is set up, the government is prepared to work with it.
49	Appoint an authority to coordinate transportation planning for the less mobile, such as the elderly and the disabled, to ensure integrated access for all.	Not accepted. The issues require the close collaboration of various authorities.
50	Facilitate employment for the disabled	Accepted. The relevant agencies are now studying the issues.

No.	Recommendation	Status
51	Incorporate service learning into our mainstream educational curricula	Accepted. Schools are encouraged to do so, and tertiary institutions have the flexibility to offer and design service learning opportunities.
52	Introduce Philanthropy Awards to encourage corporate philanthropy	Accepted. The National Volunteer and Philanthropy Centre will be revising the National Volunteerism Awards to incorporate philanthropy from this year.
<b>Chapter 5 — A Home to Cherish</b>		
53	Remove female quota for medical faculty in NUS	Accepted. This was conveyed to government prior to the report's finalisation, and was accepted in December 2002.
54	Harmonise the medical benefits of female and male civil servants	Under review by Minister Lim Hng Kiang's Committee on population challenges.
55	Harmonise citizenship privileges. Grant citizenship by descent to overseas-born babies of Singaporean women marrying foreigners, and overseas-stationed Singaporean fathers who are citizens by descent.	Accepted. The Constitution (Amendment) Bill has been tabled in Parliament on 17 March 2004.
56	Form a National Family Council to take a holistic and cohesive approach to analysing family issues and policies, and drive research and training on family-related policies/trends/issues.	Not accepted. MCDS does not consider it necessary to form a Council that would duplicate its role. But MCDS agrees that more can be done in research and regional/international links, and is doing so.
57	Incorporate family life education into the formal school curriculum, to help ensure that Singaporeans continue to value, develop and maintain strong family relations.	Accepted. Already implemented.
58	Increase public involvement in heritage matters to foster greater appreciation of our heritage, generate income and encourage the development of the local heritage industry.	Accepted. NHB and PMB already involve the people and private sectors in their work. Nonetheless, they could explore how to include more participation in their work.

*continued on next page*

No.	Recommendation	Status
59	Preserve memories of Singapore life through a Community Museum & Radio and Museum of Everyday Life.	Not accepted. Community history and life are already being incorporated into existing museums, exhibitions and community efforts. Community radio can also be delivered through existing radio channels.
60	Create the Temasek Heritage Foundation to act as an independent and unbiased advocate for heritage matters in Singapore.	Accepted in principle. If the people and corporate sectors are able to find the support and resources for this, they are welcome to proceed with such a Foundation.
61	Free up more time for Singaporeans; implement five-day week in Civil Service	Under review by Minister Lim Hng Kiang's Committee on population challenges.
62	Expand the sea and water sports scene here to re-make Singapore into a tropical sea sports paradise.	Accepted. The various agencies are actively pursuing strategies to achieve this.
63	Raise profile of Singapore Youth Festival; position and market SYF more effectively as a national-level event to the masses, possibly with events in the heartlands.	Accepted. The public is now able to access some SYF events but more can be done to raise the profile. MOE and NAC are working on doing so.
64	Singapore can be an Asian events hub, playing host to a world-famous international events.	Accepted. STB is actively promoting Singapore as an Asian Events Hub and attracting major international events to come here.
65	Set up an Audience Development Fund to seed the development of an arts-going culture.	Accepted. NAC already has an audience development arm, and also organises outreach activities.
66	Streamline the process of bringing in events by setting up a one-stop agency for arts and entertainment groups to contact when organising events.	Accepted. Improvements can be made to the Arts & Heritage Town of the eCitizen portal, to further facilitate the process of organising arts and entertainment events.
67	Make waterbodies, school fields and vacant state land more accessible to public for community and recreation use.	Accepted. The relevant agencies are actively exploring and introducing measures to increase accessibility to the public.

No.	Recommendation	Status
68	HDB could consider relaxing its rules on the use of void decks. Void decks are ideal for community activities that encourage residents to get out of their homes to interact with their neighbours.	Accepted. MND/HDB will work with Town Councils (which regulates the use of void decks) to relax rules where possible.
69	Enable richness of life at the 'street level'. Encourage "Sungei Road"-type flea/antique markets, or entrepreneurship through 'car boot sales' on empty land, with or without payment of a licence fee.	Accepted. To encourage these activities and to offer more flexibility to the market, MinLaw/SLA is prepared to consider time-based levy for the use of State land.
70	Accelerate the development of our rail network	Accepted in principle. MOT/LTA's vision is to develop the rail network as the backbone of our public transport system. But the rate of development would still depend on their viability as well as the financial position of the Government.

*Source:* Remaking Singapore Committee, 2004.

## APPENDIX XI: LIST OF MAJOR STATUTORY BOARDS IN SINGAPORE

Statutory Board*	Year of Formation	Predecessor
Central Provident Fund (CPF)	1955	Nil
Housing and Development Board (HDB)	1960	Singapore Improvement Trust (formed in 1972)
Economic Development Board (EDB)	1961	Singapore Industrial Promotion Board (Formed 1957)
Singapore Tourism Promotion Board (STPB)	1964	Nil
Port of Singapore Authority (PSA)	1964	Singapore Harbour Board (formed in 1913)
Board of Commissioners of Currency (BCCS)	1967	Currency Board for Malaya, British North Borneo & Brunei
Jurong Town Corporation (JTC)	1968	Spin-off from EDB
Monetary Authority of Singapore (MAS)	1971	Functions previously under various departments in Ministry of Finance
Post Office Savings Bank (POSB)	1972	Formerly a department within the Ministry of Communications
National Productivity Board (NPB)	1972	Spin-off from EDB
Sentosa Development Corporation (SBC)	1972	Nil
Singapore Institute for Standards & Industrial Research (SISIR)	1973	Spin-off from EDB
Telecommunications Authority of Singapore	1974	Amalgamation with Singapore Telephone Board in 1974 and with Postal Services Department in 1982
Urban Redevelopment Authority (URA)	1974	Urban Redevelopment Department of Ministry of National Development
Vocational & Industrial Training Board (VITB)	1979	Merger between Industrial Training Board and Education Board

Statutory Board*	Year of Formation	Predecessor
Singapore Broadcasting Corporation (SBC)	1980	Radio and Television Singapore
Trade Development Board (TDB)	1982	Formerly Department of Trade under Ministry of Finance
Mass Rapid Transit Corporation (MRT) @	1982	Nil
Construction Industry Development Board (CIDB)	1984	Nil
Civil Aviation Authority of Singapore (CAAS)	1984	Formerly Department of Civil Aviation under Ministry of Communications
National Parks Board (NParks)	1990/91 (reconstituted 1996)	Parks and Trees Unit (formed in 1967) under the Public Works Department
National Science and Technology Board	1991	Science Council
Public Utilities Board (PUB)	2001	Public Utilities Board (formed in 1963)
National Environment Agency (NEA)	2002	Nil

\* Only those of major economic or social significance are listed.

@ Privatized.

Source: Low 1991, p. 52, NEA, NParks 2004.

## APPENDIX XII: LIST OF INTERVIEWS

Code	Date	Position
I (1)	5 Feb 2003	Director Technology and Education, NOVO Technology Services
I (2)	11 Feb 2003	Chairman of Conservation Committee, Nature Society Singapore
I (3)	18 Feb 2003	Senior Research Fellow, Institute of Policy Studies
I (4)	20 Feb 2003	Chairman, Singapore Institute of International Affairs
I (5)	20 Feb 2003	Head, Resource Conservation, National Environment Agency
I (6)	29 Nov 2003	Member, Think Centre Singapore
I (7)	12 Jan 2004	Former Minister, National Development
I (8)	15 Jan 2004	Senior Research Fellow, Institute of Policy Studies
I (9)	15 Jan 2004	Walton Morais, Cherian George, Teo Ho Pin *
I (10)	16 Jan 2004	President, Think Centre Singapore
I (11)	19 Jan 2004	Senior PR Officer, Urban Redevelopment Authority
I (12)	20 Jan 2004	Research Fellow, Asia Research Institute
I (13)	26 Jan 2004	Chief Operation Officer and Assistant Director Biodiversity Centre, National Parks Board
I (14)	27 Jan 2004	Executive Director and Project Manager Singapore Environment Council
I (15)	27 Jan 2004	Member, Nature Society Singapore
I (16)	28 Jan 2004	Former President, Nature Society Singapore
I (17)	29 Jan 2004	President, Nature Society Singapore
I (18)	Various dates#	Member and biographer, Nature Society Singapore

\* Taped Interview from Channel News Asia.

# E-mail interviews